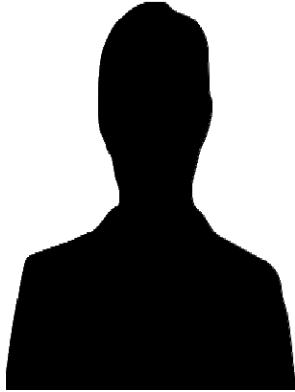


LSUHSC-NO Academy for the Advancement of Educational Scholarship
Member Profile



Suzanne LeFevre, M.D.

Academy Master Teacher

Assistant Professor

Department of Pediatrics

School of Medicine

Email: slefev@lsuhsc.edu

Telephone: 504-896-2798

Fax:

Biographical Sketch:

Educational Domains Represented in Academy Portfolio

- Teaching
- Curriculum Development, Instructional Design and Assessment of Student Learning
- Advising and Mentoring
- Leadership and Service
- Educational Research

Teaching/Education Expertise