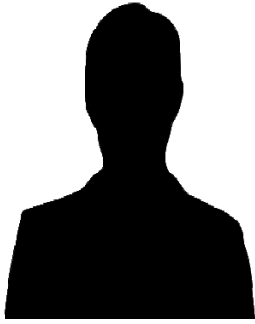


LSUHSC-NO Academy for the Advancement of Educational Scholarship  
Member Profile



Qingzhao Yu, Ph.D.

Academy Fellow

Assistant Professor

Department of Biostatistics

School of Public Health

Email: qyu@lsuhsc.edu

Telephone: 504-568-6086

Biographical Sketch:

**Positions and Employment**

2006 – Present Assistant Professor of Biostatistics, Louisiana State University Health Sciences Center.

**Other Experience and Professional Memberships**

- |                |   |
|----------------|---|
| 2004 – Present | American Statistical Association            |
| 2004 – Present | Institute of Mathematical Statistics        |
| 2005 – Present | International Society for Bayesian Analysis |

**Selected peer-reviewed publications.**

1. **Yu, Q.**, Stasny, E. A. and Li, B. 2008, Bayesian Models to Adjust for Response Bias in Survey Data: An Example in Estimating Rape and Domestic Violence Rates from the NCVS, *Annals of Applied Statistics*, 2, 665-686.
2. **Yu, Q.**, Scribner, R., Carlin, B., Theall, K., Simonsen, N., Ghosh-Dastidar, B., Cohen, D., Mason, K. 2008, Multilevel Spatio-temporal Dual Change-point Models for Relating Alcohol Outlet Destruction and Changes in Neighborhood Rates of Assaultive Violence, *Geospatial Health*, 2(2), 161-172.
3. Li, B., **Yu, Q.** 2008, Feature Extraction for Classification of Functional Data, *Computational Statistics & Data Analysis*, 52(10), 4790-4800.
4. **Yu, Q.**, Li, B. and Scribner, R. 2009, Hierarchical Additive Modeling of Nonlinear Association with Spatial Correlations - An Application to related alcohol outlet destruction and changes in neighborhood rates of assaultive violence. *Statistics in Medicine*, 28(14), 1896-1912.
5. Li, B., Sanderlin, R., Melanson, R. and **Yu, Q.** 2009, Spatio-Temporal Analysis of A Plant Disease in A Non-uniform Crop: A Monte Carlo Approach. Accepted by *Journal of Applied Statistics*.
6. **Yu, Q.**, Li, B., Fang, Z. and Peng, L. 2009, An Adaptive Sampling Scheme Guided by BART With Application to Predict Processor Performance. Accepted by *The Canadian Journal Of Statistics*.
7. Li, B. and **Yu, Q.** 2009, Robust and Sparse Bridge Regression. *Statistics and Its Interface*, 2, 481-491.
8. Scribner, R., Theall, K., Simonsen, N., Mason, K. and **Yu, Q.**, 2009, Misspecification of the Effect of Race in Fixed Effects Models of Health Inequalities. *Social Science & Medicine*, 69, 1584-1591.
9. **Yu, Q.**, 2010, Weighted Bagging - A Modification of AdaBoost from the Perspective of Importance Sampling. Accepted by *Journal of Applied Statistics*.
10. Theall, K., Scribner, R., Stephanie Broyles, **Yu, Q.**, Jigar Chotalia, Simonsen, N., Schonlau, M., and Carlin, B., 2010, Impact of Small Group Size on Neighborhood Influences in Multilevel Models. Accepted by *Journal of Epidemiology and Community Health*.

Educational Domains Represented in Academy Portfolio

- Teaching
- Curriculum Development, Instructional Design and Assessment of Student Learning
- Advising and Mentoring
- Leadership and Service

Teaching/Education Expertise

Biostatistics/Statistics