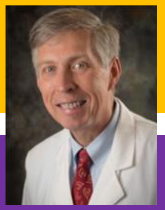


# LSUHSC PEDIATRICS FACULTY:



**Raymond Watts, MD**  
Professor and Head  
Department of Pediatrics

## ALLERGY/IMMUNOLOGY



**Ken Paris, MD, MPH**  
Associate Professor  
Division Head



**Augusto Ochoa, MD**  
Professor



**Ricardo Sorensen, MD**  
Professor

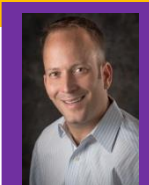


**Luke Wall, MD**  
Assistant Professor



**Elizabeth Wisner, MD**  
Assistant Professor

## AMBULATORY PEDIATRICS & ADOLESCENT MEDICINE



**Ryan Pasternak, MD, MPH**  
Associate Professor  
Division Head



**Sue Berry, MD, MPH**  
Professor



**Mark Dal Corso, MD**  
Associate Professor



**Amanda Dumas, MD**  
Assistant Professor



**Kyle Fulton, MD**  
Assistant Professor



**Corey Hebert, MD**  
Assistant Professor



**Marcella Houser, MD**  
Assistant Professor



**Suzanne Lefevre, MD**  
Associate Professor



**Betty Lo-Blais, MD**  
Professor



**William Morgan, MD**  
Assistant Professor

## CARDIOLOGY



**Ernest Siwik, MD**  
Associate Professor  
Division Head



**Michale Brummund, MD**  
Associate Professor



**Kelly Gajewski, MD**  
Assistant Professor



**Christian Lilje, MD**  
Professor



**Kiran Mallula, MD**  
Assistant Professor



**Stefani Samples, MD**  
Assistant Professor



**Steffan Sernich, MD**  
Associate Professor



**Aluizio Stopa, MD**  
Associate Professor

## CARDIAC ICU



**Kurt Piggot, MD**  
Associate Professor  
Division Head



**Bonnie Desselle, MD**  
Professor  
Division Head  
Vice-Chair, Education



**Amy Creel, MD**  
Associate Professor



**Gary Duhon, MD**  
Associate Professor



**Nihal Godiwala, MD**  
Assistant Professor



**Richelle Monier, MD**  
Assistant Professor



**Janet Rossi, MD**  
Assistant Professor

## CRITICAL CARE

## EMERGENCY MEDICINE



**Raghubir Mangat, MD**  
Associate Professor  
Division Head



**Jerussa Aita-Levy, MD**  
Assistant Professor



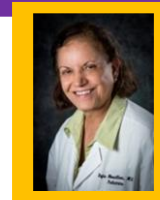
**Mamatha Ananth, MD**  
Assistant Professor



**Arturo Gastañaduy,  
MD, MPH**  
Associate Professor



**Anna McFarlin, MD**  
Assistant Professor

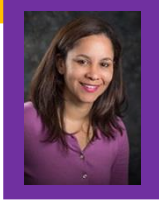


**Raja Mouallem, MD**  
Associate Professor

## ENDOCRINOLOGY



**Stuart Chalew, MD**  
Professor  
Division Head



**Dania Felipe, MD**  
Assistant Professor

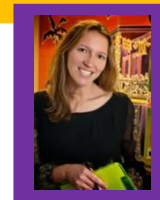


**Ricardo Gomez, MD**  
Associate Professor



**Peter Tieh, MD**  
Assistant Professor

## FORENSIC MEDICINE

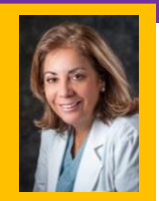


**Jamie Jackson, MD**  
Assistant Professor

## GASTROENTEROLOGY AND NUTRITION



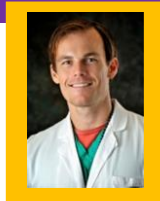
**Paul Hyman, MD**  
Professor  
Division Head



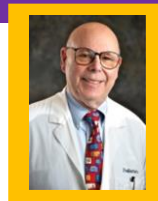
**Elizabeth Alonso, MD**  
Assistant Professor



**Raynorda Brown, MD**  
Associate Professor



**Brent Keith, MD**  
Assistant Professor



**Allan Rosenberg, MD**  
Professor

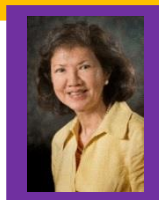
## GENETICS



**Michael Marble, MD**  
Professor  
Division Head



**Karen Weissbecker, PhD**  
Assistant Professor



**Lolie Yu, MD**  
Professor  
Division Head



**Renee Gardner, MD**  
Professor



**Dana LeBlanc, MD**  
Assistant Professor



**Cori Morrison, MD**  
Assistant Professor



**Pinki Prasad, MD, MPH**  
Assistant Professor



**Maria Velez, MD**  
Professor

## HEMATOLOGY/ONCOLOGY

## HOSPITALISTS



**Jay Hescock, MD**  
Associate Professor  
Division Head



**Robin English, MD**  
Professor



**Amanda Messer, MD**  
Assistant Professor



**Megan Murphy, MD**  
Assistant Professor



**Amy Prudhomme, DO**  
Assistant Professor



**Leslie Reilly, MD**  
Assistant Professor



**Chelsey Sandlin, MD**  
Assistant Professor



**Shubho Sarkar, MD**  
Assistant Professor

## NEONATOLOGY



**Brian Barkemeyer, MD**  
Professor  
Division Head  
Vice Chair, Clinical Services



**Raegan Gupta, MD**  
Assistant Professor



**Christy Mumhrey, MD**  
Assistant Professor



**Staci Olistter, MD**  
Associate Professor



**Jessica Patrick-Esteve, MD**  
Assistant Professor

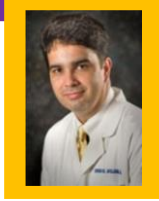


**Dana Rivera, MD**  
Associate Professor



**Jeff Surcouf, MD**  
Assistant Professor

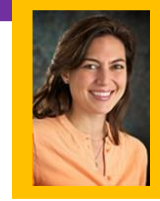
## NEPHROLOGY



**Diego Aviles, MD**  
Professor  
Division Head



**Isa Ashoor, MD**  
Assistant Professor



**Caroline Straatmann, MD**  
Assistant Professor

## INFECTIOUS DISEASES



**Rodolfo Bégúé, MD**  
Professor  
Division Head

## PEDIATRIC MENTAL HEALTH



**Joy Osofsky, PhD**  
Professor  
Division Head

## RHEUMATOLOGY



**Abraham Gedalia, MD**  
Professor  
Division Head

## RESEARCH



**Michael Lan, PhD**  
Professor



**Tri Tran, MD, MPH**  
Associate Professor



**Ping Wang, PhD**  
Associate Professor



**Hong Xin, MD, PhD**  
Associate Professor



**Jovanny Zabaleta, PhD**  
Associate Professor