

Comparison of Regenerative Limb Salvage to Flap-based Reconstruction of Complex Extremity Wounds: A Randomized Control Trial

Ryan D. Hoffman¹; Denise Danos PhD², Ann McKendrick³, Frank Lau MD³.

School of Medicine¹, Department of Behavior and Community Health², Department of Plastic and Reconstructive Surgery³
Louisiana State University Health Sciences Center, New Orleans, LA

Introduction

Traumatic and chronic wounds of the extremities require amputation unless reconstructive surgery can achieve soft tissue coverage of exposed critical structures: bone, tendon, nerve.

Free flap limb salvage (fLS) is the standard of care but is demanding:

- Trained microsurgeon
- Long surgeries with multiple revisions needed
- Extensive post operative monitoring
- Expensive: \$170,000 per patient
- fails in 13-18% of attempts
- 75% of failures ultimately result in amputation.

An alternative technique is regenerative limb salvage (rLS) using dehydrated human amnion/chorion membrane (dHCAM)

Specific Aims:

The goal of this study was to compare rLS to fLS in a multi-centered, prospective, randomized controlled trial (RCT) with a crossover option upon reconstructive failure

Methods

Between 2016 and 2018, 48 subjects with complex wounds of the extremities were enrolled

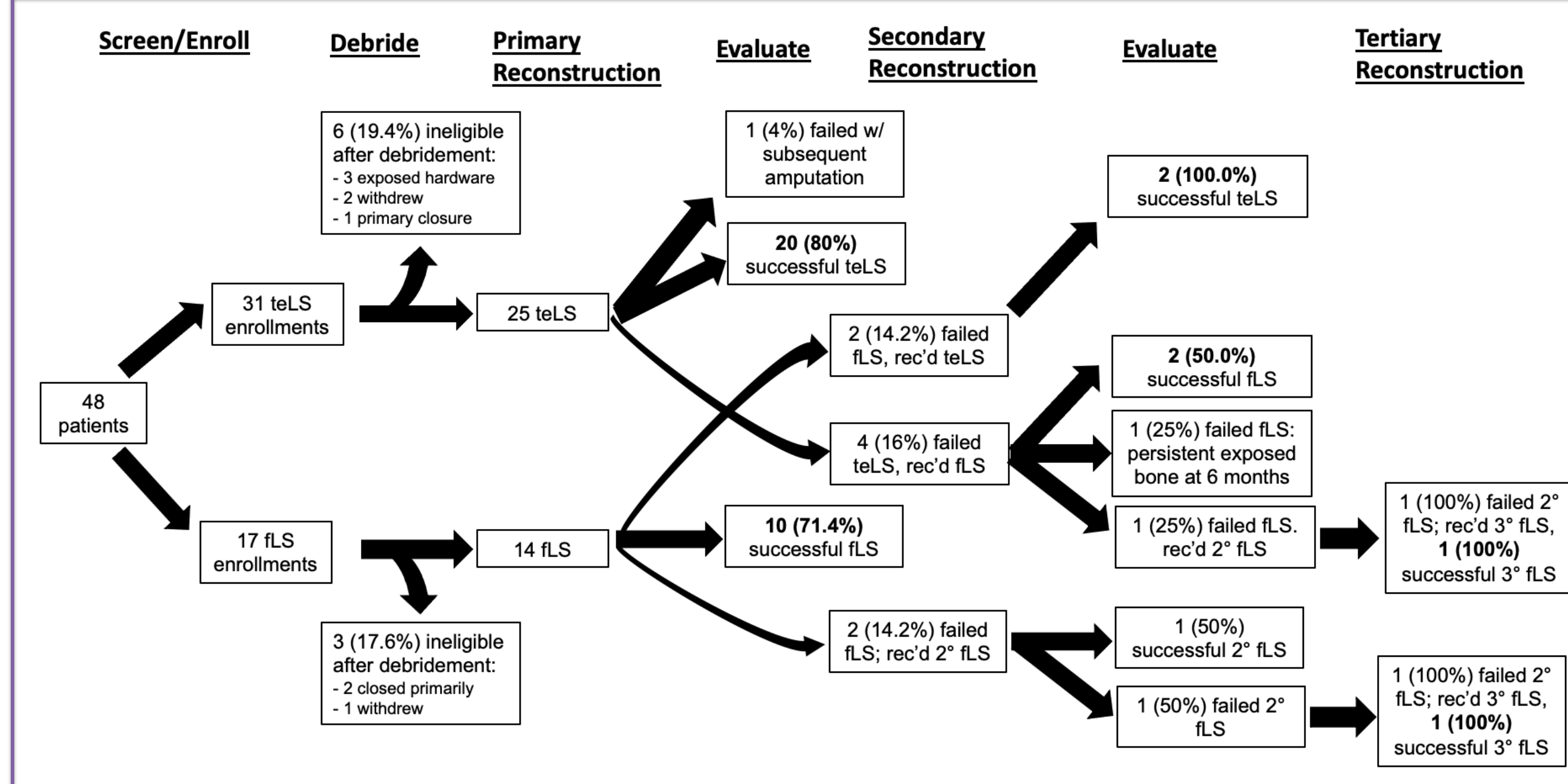
Exclusion criteria: malignancy, exposed hardware, non-flap candidates (ischemic limb, PVD)

Patients were randomized to fLS or rLS in a 1:2 ratio

Primary outcomes included

- comparing successful reconstruction
- time to definitive closure
- time to weight bearing

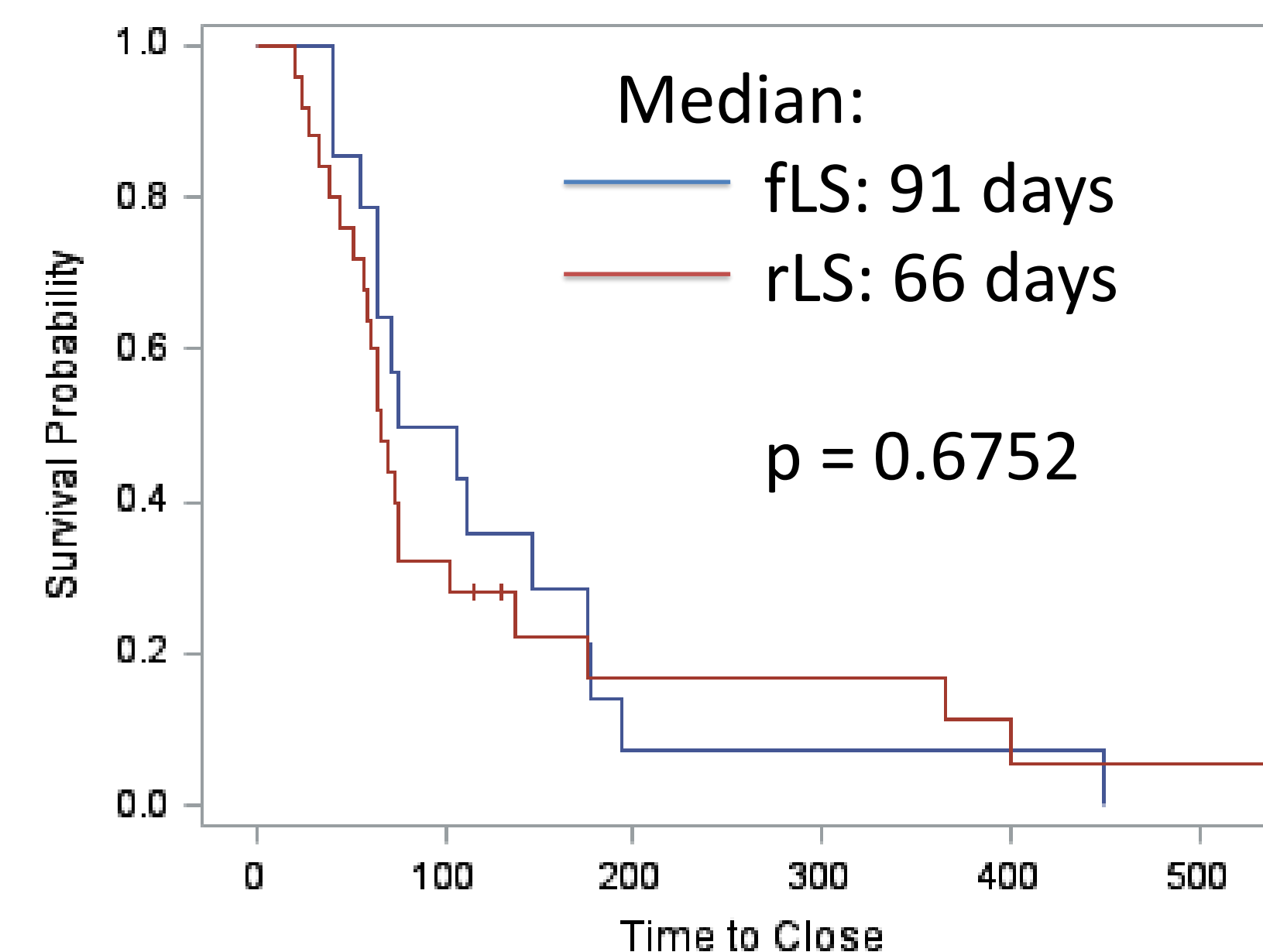
Methods



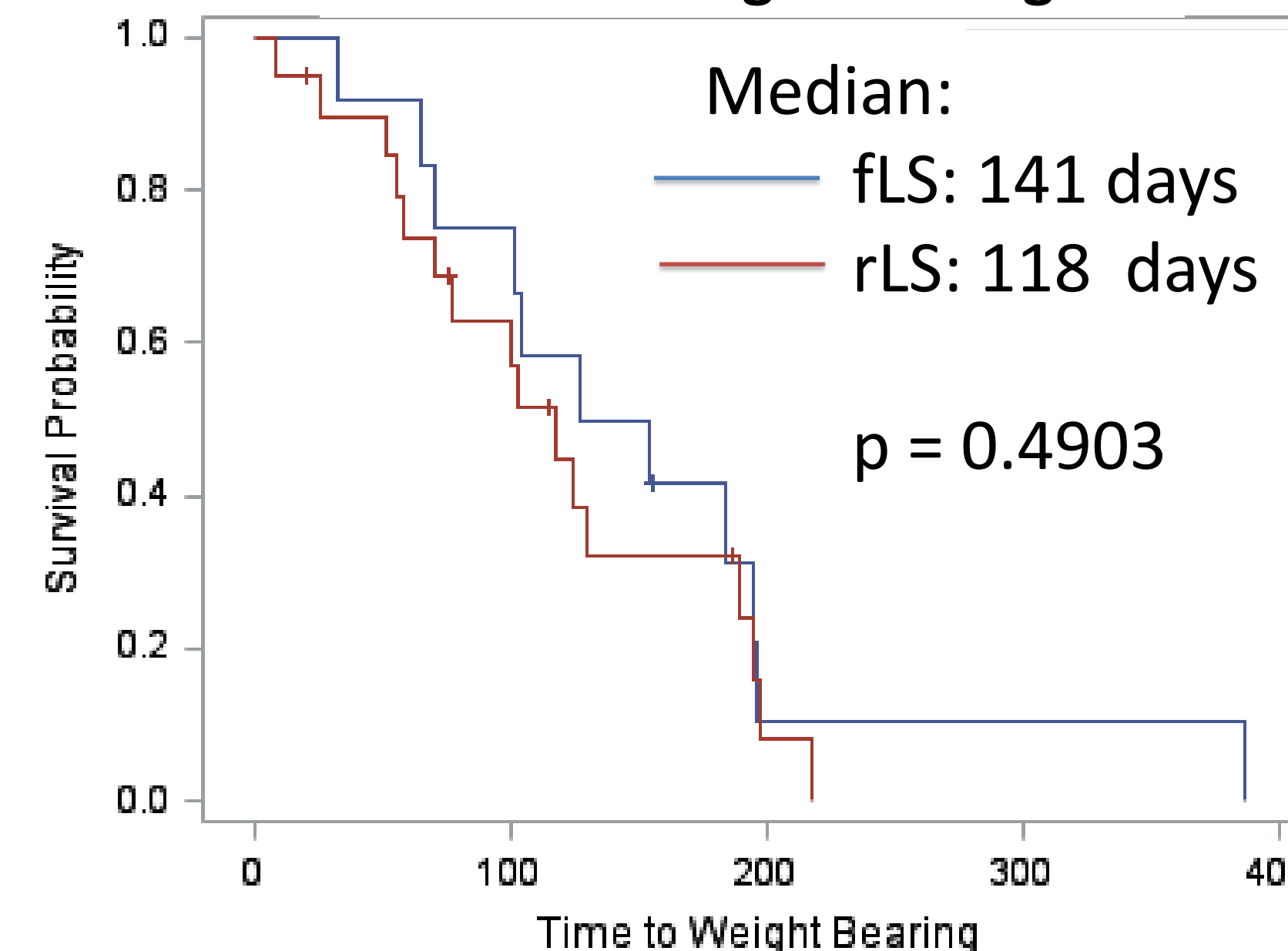
Results

	fLS (n=14)	teLS (n=25)	p-value
Success Rate, n (%)	12 (85.71)	20 (80)	1.0000
Persistent Exposed Structures, n (%)	0 (0)	1 (4)	1.0000

Time to Definitive Closure



Time to Weight Bearing



Results



rLS: wound of the dorsal aspect of the foot with exposed tendon treated with dHCAM + skin grafting



rLS: wound of the plantar aspect of the foot with exposed tendon treated with dHCAM + skin grafting.

- At time of presentation
- Post-debridement and dHCAM application
- Wound bed 5 days post treatment
- Wound bed after skin grafting

Conclusions

- rLS success rate equivalent to conventional fLS
- Comparable time to definitive closure
- Less bulky than fLS, useful for some anatomic locations
- Several extra advantages:
 - No fLS options are lost
 - dHCAM treatments can be performed in an outpatient setting, freeing up operating room and inpatient resources
 - Can be performed without microsurgical expertise thus increasing patient access to LS

Questions: Rhoff3@lsuhsc.edu