

February 15, 2022



School of Medicine  
Department of Pediatrics

## LSU Pediatrics Tuesday Tidbits

Welcome to the Department of Pediatrics' weekly email blast designed to deliver important department information straight to your inbox.

Visit our  
website

### LSU Pediatrics Announcements



**Dr. Ryan Pasternak and Dr. Benjamin Springgate Helped New Orleans Public Schools Become the First in the Nation to Require COVID Vaccinations.** [Read the article here.](#)

---

### Dr. Maria Velez Re-elected to the ASPHO Board of Trustees

Dr. Maria Velez was re-elected to the American Society of Pediatric Hematology/Oncology's Board of Trustees. Her second term will commence at the conclusion of the 2022 ASPHO Conference in May and will last three years. Congratulations, Dr. Velez!



---

## LSU Pediatrics was Strongly Represented at the 2022 Southern Regional Meeting (SRM)



LSU Pediatrics residents, fellows, and faculty presented 20 posters and 11 platform presentations at last week's SSPR meeting. Congratulations to Pediatric Hospital Medicine Fellow **Callie Roth** who was awarded a 2022 SSPR Trainee Travel Award for her poster titled *Pediatric Multidisciplinary Care Huddle: Improving Quality, Efficacy, and Efficiency*. Shubho Sarkar was also an author on the project.

The week of the Southern Regional Meeting started with a practice session for trainee oral presentations hosted by Dr. Bonnie Desselle and the Children's Hospital Office of Medical Education. The session was well supported by LSU Pediatrics faculty who provided both immediate and written feedback to the resident and student participants.

At the Southern Regional Meeting, **Dr. Julie Galois** served as a reviewer for Neonatology abstracts. **Dr. Macella Houser** served in her third year as Region 7 Co-chair for the Academic Pediatric Association. She participated by reviewing Pediatric abstracts, organizing APA-related aspects of the

conference (workshops, business meeting and breakfast) and moderating the Pediatric Clinical Case Symposium. **Dr. Luke Wall** served as the LSU Pediatrics Institutional Representative to the Southern Society for Pediatric Research. He reviewed Allergy/Immunology abstracts, served as a Trainee Travel Award judge, and moderated the oral session on Inflammation. He was elected as SSPR Council Member. [Click here to view more pictures from the meeting.](#)

## Oral Presentations:

Pediatrics Resident **Alex Ranucci** gave an oral presentation titled *Racial and Ethnic Mortality Disparities in Pediatric ICU Patients*. Other authors included H Lee, G Duhon, L Davis and B Desselle.

Pediatrics Resident **Jinnesse Taylor** presented *Assessing Implicit Bias in Pediatric Clerkships*.

Other authors included L Davis, A Prudhomme, C Mumphrey and M English

Neonatology Fellow **Kelly Ordemann** gave an oral presentation titled *Transient Myeloproliferative Disorder in Trisomy 21 Complicated by Tumor Lysis Syndrome and Multi-Organ Failure*. Other authors included L Yu, M Knecht, M Espanol- Mendez, J Robinson and J Patrick.

Pediatrics Resident **Mike Evers** presented *Modern Conundrum: Chickenpox in a Vaccinated Child*. A Buttaci, I Hill and A Messer also served as authors.

Hematology/Oncology Fellow **Jordan Doss** presented *A Rare Case of Adenoid Cystic Carcinoma of the Soft Palate in an Adolescent Female Presenting as Chronic Pharyngitis*. Other authors included J D'Souza, E Zakris, S Collier and C Morrison.

Pediatrics Resident **Ashley Reeves** gave an oral presentation titled *Restoration Of Immune Cells And Resolution of Inflammation After Replenishment of Vitamin C in Patient with Chronic Granulomatous Disease Treated with Allogenic Stem Cell Transplant*. D Leblanc, Z LeBlanc and L Yu served as authors.

Med/Peds Resident **Andrea Ito** presented *No Laughing Neuropathy: Polyneuropathy from Nitrous Oxide-Induced Vitamin B12 Deficiency*. Other authors included LS Engel and B Lo.

Pediatrics Resident **Karleigh Barkemeyer** presented *Multisystem Inflammatory Syndrome in Children Masquerading as Retropharyngeal Infection*. A Bearison and A Messer also served as authors.

In addition to her Trainee Travel Award, **Callie Roth** also gave an oral presentation titled *Social Determinants of Health Curriculum for Pediatric Clerkship Students* at the conference. Amy Prudhomme was also an author on that project.

Other oral presentations in which department faculty or trainees were included as co-authors include:

*Covid-19 Infections in Pediatric Hematology Oncology Patients in Louisiana*  
HA Hasan, Z LeBlanc, MC Velez, D Leblanc, R Gardner, C Morrison, L Finger,  
V Charbonnet and P Prasad

*The Effect of Methotrexate Treatment on Neuroinflammation Gene Expression  
in Pediatric Cancer Patients*

G Sheets, B Moore, A Umrigar, E Beaton, M Stark, M Norman, J Doss, P  
Prasad, J Zabaleta, L Li, C Hicks and F Tsien.

*An Unusual Case of Multiple Idiopathic Coronary Artery Aneurysms*

T Fradella-Doucet, A Ito, M Bank, CH Harris, N Jain and S Sanne.

## **Poster Presentations:**

*Pediatric Intensive Care Unit and Operating Room Handoff Process  
Improvement*

H Bauer, A Creel and R Monier

*A Non-Infectious Cause of Chronic Sinusitis*

J Coren and G Hescok

*Rare Case of Infantile Botulism*

ML Evers, K Glisson, C Gauthreaux, A Courtney, M Silio and I Shukla

*Medical Management of a Facial Cleft*

ML Evers, N Vegh and GK Fulton

*Occult Bacteremia in Neonate with Staphylococcus Aureus Conjunctivitis*

L Gagnon, H Knight and R Mangat

*A Case of Orbital Cellulitis Complicated by Mucormycosis in a Diabetic Teen*

NP Glynn, J Collette and C Sandlin

*A Case of Fetal Methotrexate Syndrome--A Rare Cause of Multiple Congenital  
Anomalies*

P Joslyn, A Barkemeyer, R Gupta and B Barkemeyer

*An Unexpected Potentially Fatal Diagnosis in a Child with Nephrotic  
Syndrome: Impact of Genetic Testing*

R Lambert, R Craver, E Alonso-Rubio, Z LeBlanc, AM Abreo, R Gomez and I  
Ashoor

*A Case of an Intramuscular Hemangioma of the Muscles of Mastication*

E Levenson and W Morgan

*Finnish Type Congenital Nephrotic Syndrome with NPHS1 Gene Mutation*

A Nuttli, J Gallois, J Farge, K Simms and M Knecht

*Admit Respiratory Protocol for Very Premature Infant Aims to Decrease  
Bronchopulmonary Dysplasia*

A Nuttli, J Gallois, R Beyl and J Surcouf

*Passage of a Worm in Stool of a General Pediatrics Clinic Patient*



P Pocreello, J Connick and S Lefevre

*A Case of Chromobacterium Violaceum Infection in a Patient with a New Diagnosis of Chronic Granulomatous Disease (CGD)*

AA Prevot, DL Rohlfs Rivera, AM Abreo and EL Wisner

*Short Stature, Hearing Loss, Retinitis Pigmentosa and Distinctive Facies (SHRF) Syndrome: A Mild Presentation*

K Ohja, AE Reeves, H Meddaugh and R Zambrano

*Pilot Assessment of Cleft Lip and Palate Patients at a Regional Cleft Center*

SN Rimmer and GK Fulton

*A Case of Wernicke Encephalopathy in a Patient with Autism Disorder and Restrictive Eating*

DL Rohlfs Rivera, AA Prevot, N Sharma, G Hescocock and D Manning

*Pediatric Multidisciplinary Care Huddle: Improving Quality, Efficacy, and Efficiency.*

C Roth and S Sarkar

*Transplant Associated-Thrombotic Microangiopathy (TA-TMA) and Posterior Reversible Encephalopathy Syndrome (PRES) in a Patient with Sickle Cell Disease Post Bone Marrow*

*Transplant*

CM Sullivan and Z LeBlanc

*Not Your Average Salmonella: An Infant with Acalculous Purulent Cholecystitis*

J Taylor and JM DeBord

*Dermatomyositis, the Great Predictor*

C Vaughn, P Say, LS Engel and S Guillory

---

## Interested in Academic Promotion?

For faculty interested in learning more about academic promotion, please try to attend one of the school's presentations on this topic. Details can be found in Dr. Stephanie Taylor's email from February 10th. Or you can simply choose to attend one of her Zoom interactive presentations on promotions on these dates:

- March 21<sup>st</sup> (Monday) at 4:30 PM
- April 5<sup>th</sup> (Tuesday) at 7:30 AM
- April 14<sup>th</sup> (Thursday) at 4:30 PM
- April 20<sup>th</sup> (Wednesday) at 7:30 AM

Please register for one of these presentations at:

[https://www.surveymonkey.com/r/Academic\\_Advancement\\_Workshop\\_2022](https://www.surveymonkey.com/r/Academic_Advancement_Workshop_2022)

Faculty should discuss candidacy with their division head. If you are thinking about applying for promotion, please plan to meet with our department Promotion and Tenure Committee chair Dr. Brian Barkemeyer by the end of April (email [bbarke@lsuhsc.edu](mailto:bbarke@lsuhsc.edu) to schedule). Those applying for promotion

must meet all applicable guidelines including submission of your CV in LSU format by May 20, 2022. Kelly Allerton will be available to help format your CV appropriately, but this process can take time, so please plan to do in advance of the deadline.

## CHNOLA OME Hosts Faculty Development Seminar February Topic: Promotions

### CHNOLA Office of Medical Education: Faculty Development Seminar



Children's Hospital  
New Orleans  
LCMC Health

### "Promotions 101"

Tuesday, February 15, 2022

5:00pm

Please join CHNOLA Office of Medical Education: Faculty Development Seminar from your computer, tablet, or smartphone:

To receive CME Credit, you **MUST sign in using your legal name.**

**Zoom link:** <https://us06web.zoom.us/j/89565462370?from=addon>

**Meeting ID:** 895 6546 2370

**Note:** This is a live activity. The link is only valid from 5:00 PM – 6:00 PM and the presentation will not be recorded for CME credit.



**Brian Barkemeyer, MD**  
Professor of Pediatrics  
Vice Chairman of Clinical Services  
Sheila B. Gottschalk, MD Professorship of Excellence in Teaching  
Medical Director, Children's Hospital NICU



**Marie A. Krousel-Wood, MD, MSPH**  
Professor  
Associate Provost for the Health Sciences  
Senior Associate Dean for Faculty Affairs / Associate Dean for Public Health and Medical Education

**Objectives:** At the conclusion of this activity, participants should be able to:

1. Summarize key aspects of the promotion pathway.
2. Differentiate the various criteria for advancement, clinical, educational, research, community service, and academic/leadership.
3. Discover optimal tracking needs over time to facilitate the promotion application process.

**Intended audience:** This activity is specifically directed towards the pediatrician, but it is open to all other interested physicians and fellows.

**CME statement:** Children's Hospital is accredited by the Louisiana State Medical Society to provide continuing medical education for physicians. Children's Hospital designates this live activity for a maximum of *1.0 AMA PRA Category 1 Credit*<sup>™</sup>. Physicians should claim only the credit commensurate with the extent of their participation in the activity.



## Pediatric Interest Group Collects Over 700 Childrens Books for Pediatrics Residency's Healthy Tigers



The LSU Medical Student Pediatric Interest Group (PIG) raised over 700 children's books for the LSU Resident's Healthy Tigers Group. This included over 140 Spanish books. These books are given to children at their well visits to promote reading and literacy. Resident Kayla Griese joined PIG President Caroline Lawless and a few other medical students to deliver the books last week to the joint LSU/Tulane Academic Clinic.



**It's Carnival Time!**

**Throw me something!  
Look for these riders when you go out to the parades:**

## Friday, February 18:

### **Krewe of Cleopatra:**

- **Amanda Dumas** - Float 4 "Single Ladies", neutral ground side, lower level, position 11
- **Jessica Patrick** - Float 18, sidewalk side, lower level, first position

## Saturday, February 26:

### **Krewe of Iris:**

- **Ashley Reeves** - Float 22A, sidewalk side, upper level, position 13

### **Krewe of Tucks:**

- Float 8:
  - **Shubho Sarkar** - sidewalk side, first tandem, back corner
- Float 11B:
  - **Will Morgan** - neutral ground side, upper level
- Float 12A:
  - **Isa Ashoor** - sidewalk side, lower level
  - **Raymond Watts** - sidewalk side, lower level, 5th from front
  - **Kyle Fulton** & former residents **Derek Pepiak** and **Jaime Michel** - neutral ground side, lower level
- Float 12B:
  - **Amy Creel & Hannah Bauer** - sidewalk side, lower level
  - Former residents **Nicole Giambrone** and **Rachel Dawkins** - neutral ground side, lower level

**Riding in a parade? Let the department know where to find you!**

**Tell us** where we can find you! Please include:

- Krewe name
- Float number
- Neutral ground or sidewalk side
- Position on float



Send in your house float or parade pictures! Thanks to Ryan Pasternak for sending in these pictures of his house float.

---

## **Other Announcements**



Latest edition of LSU SOM's *The Pulse*. ([link](#))

Updated LSU COVID Policies ([information](#))

LSUHSC COVID Self-Reporting ([information](#))

### ***Resident Education***

- Resident Participation in Research ([information](#)) - complete a shared spreadsheet with a brief description of the project you are looking for collaboration or assistance with.
- GeauxHealth! is a collaboration between LSU and Tulane residents to create a resource guide promoting medical trainee awareness of social determinants of health as well as providing a tool for easy use in clinic and during discharge planning. Check out more info [here](#) and on their website: <https://geauxhealth.org/>

### ***Research and Grants***

- Updated: Several Avenues of Stats Support, Education and Consultation ([information](#)) ([using stats models through CITI](#))
- New Pre-Review for Grant Proposals service offered by LSU ([information](#))

### ***Administrative Reminders***

- Importance of Time Certification ([information](#)) - learn more about why we certify time each month!
- Use of Non-LSUHSC Email ([information](#))
- Download the new Department Composites for the 2021-2022 academic year! ([Resident](#), [Fellow](#), [Faculty](#), [Administrative Staff](#)).

## **FACULTY DEVELOPMENT**

*New video monthly*

### **February Video: RIME**

RIME - Reporter, Interpreter, Manager, and Educator are skills we expect our learners to master throughout training. This 11 minute video reminds us of how these categories can be useful in giving meaningful feedback and in writing evaluation comments. Invest a few minutes to review as this video can help you strengthen your feedback and evaluations.

<https://vimeo.com/76308600>

Please send any suggestions or areas of faculty development need to [acree1@lsuhsc.edu](mailto:acree1@lsuhsc.edu).

If you are interested in other forms of Faculty Development, visit these websites:

- [LSU Pediatrics Faculty Development Page](#)
- [LSUHSC GME Medical Education Development Site](#)

For questions or comments regarding Faculty Development, please contact [Amy Creel](#).

## CHNOLA Announcements

### EPIC Update

#### ***A Message from the Associate Chief Medical Information Officer***

When admitting a patient to the inpatient setting, please ensure that the Admission Med Rec is fully complete, ***including reconciliation/ordering of home medications***. This can be completed in the Admission Tab. Please do not skip the “Reconcile Prior to Admission Medications” button in the navigator. If you need guidance on this, please contact me ([ssark1@lsuhsc.edu](mailto:ssark1@lsuhsc.edu)) or Dr. Aaron Thompson ([aaron.thompson@lcmchealth.org](mailto:aaron.thompson@lcmchealth.org)).

### **Report your flu-like symptoms**

Please notify Employee Health at 504.962.6270 if you have any flu-like symptoms before reporting to work. Symptoms may include cough, congestion, headache, with or without fever.

### **CHNOLA Parenting Center's Spring Schedule**

The [Parenting Center's Spring 2022 schedule](#) is now available. Designed for parents of infants through adolescence, the schedule includes a variety of classes to support parents in their parenting journey. If you have any questions or would like The Parenting Center to facilitate one of these sessions for you, email [X. Patrice Wright, M.Ed.](#), Administrative Manager, The Parenting Center.

Latest edition of CHNOLA Employee E-News ([link](#))

## Upcoming Events

### Grand Rounds

***For those who prefer an Outlook Calendar Reminder for Grand Rounds, please click [here](#) for directions that walk you through creating a recurring reminder.***

# Virtual Pediatric Grand Rounds



Children's Hospital  
New Orleans  
LCMC Health

## "Burn Care Across the Continuum"

Wednesday, February 16, 2022

Noon

Please join Pediatric Grand Rounds from your computer, tablet, or smartphone:

To receive CME or CEU Credit, you **MUST register through EventBrite.**

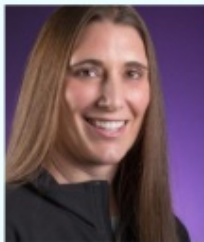
**Register here:** <https://www.eventbrite.com/e/pediatric-grand-rounds-81821-tickets-166693441571>

**Zoom link:** <https://lsuhsc.zoom.us/j/92312437678?pwd=amd0RENwQWJ2L1BDNW1zeHVQRHhjQT09>

**Meeting ID:** 923 1243 7678

**Passcode:** 235623

**Note:** This is a live activity. The link is only valid from noon – 1:00 PM and the presentation will not be recorded for CME or CEU credit. Please register via EventBrite to receive credit.



Nicole Kopari, MD, FACS, is a nationally recognized burn surgeon who serves as the Pediatric Burn Medical Director at Children's Hospital New Orleans.

She is an Assistant Professor of Surgery at LSU Health New Orleans and Tulane University Medical Center. She earned her medical degree from the University of Minnesota Medical School and completed her residency in General Surgery at Michigan State University. Dr. Kopari then completed a burn fellowship at the University of Washington, Harborview Medical Center followed by a fellowship in surgical critical care at the University of Texas-Memorial Hermann Houston. Dr. Kopari is board certified by the American Board of Surgery in both general surgery and surgical critical care.

**Objectives:** At the conclusion of this activity, participants should be able to:

1. Diagnose superficial versus deep burns
2. List the four phases of definitive burn care
3. Describe why CHNOLA needs a comprehensive pediatric burn unit

**Intended audience:** This activity is specifically directed towards the pediatrician, but it is open to all other interested physicians, residents, medical students, and allied health professionals.

**CME statement:** Children's Hospital is accredited by the Louisiana State Medical Society to provide continuing medical education for physicians. Children's Hospital designates this live activity for a maximum of *1.0 AMA PRA Category 1 Credit*<sup>™</sup>. Physicians should claim only the credit commensurate with the extent of their participation in the activity.

**CEU statement:** Children's Hospital is approved as a provider of nursing continuing professional development by Louisiana State Nurses Association, an accredited approver by the American Nurses Credentialing Center's Commission on Accreditation.



**Eventbrite link to register for Grand Rounds on 2/16:**

<https://www.eventbrite.com/o/chnola-office-of-medical-education-34140724807>

**Anyone who does not wish to earn CME/CEU credit can continue join Grand Rounds through the Zoom portal:**

[https://lsuhsc.zoom.us/j/92312437678?](https://lsuhsc.zoom.us/j/92312437678?pwd=amd0RENwQWJ2L1BDNW1zeHVQRHhjQT09)

[pwd=amd0RENwQWJ2L1BDNW1zeHVQRHhjQT09](https://lsuhsc.zoom.us/j/92312437678?pwd=amd0RENwQWJ2L1BDNW1zeHVQRHhjQT09)

Meeting ID: 923 1243 7678, Passcode: 235623

One tap mobile: +16465588656 or +13017158592

Any questions about Eventbrite can be sent to [emma.crary@lcmchealth.org](mailto:emma.crary@lcmchealth.org).



**Thursday, February 17, 2022 from 2-5p EST** The CTR N3C sites are hosting an investigator engagement event for those interested in attending. This event will demonstrate IDeA-CTR members to the National COVID Cohort Collaborative (N3C). The N3C Data Enclave is a secure platform through which harmonized clinical data provided by our contributing members are stored. The Enclave includes demographic and clinical characteristics of patients who have been tested for or diagnosed with COVID-19, and further information about the strategies and outcomes of treatments for those suspected or confirmed to have the virus. This event will feature a keynote presentation by Dr. Chris Chute, Co-PI for N3C, and presentations by IDeA-CTR N3C leadership and investigators, including Drs. Sally Hodder and Clifford Rosen. [Click here for more information.](#)

**Tuesday, March 1, 2022** - The USC/UCLA CBPH invites interested investigators to submit proposals by March 1. These pilots are to support projects for twelve months beginning on July 1<sup>st</sup>, 2022 and end on June 30<sup>th</sup>, 2023. [See full announcement here.](#) Research should be relevant to health outcomes that are important in the aging process but is not limited to research on only older samples. We have a particular interest in promoting the development of novel biomarker measures for use in populations. Current focus of CBPH pilots is novel biomarkers for health outcomes at older ages, epigenetics, transcriptomics, telomeres, proteomics, markers of immune function and senescence and MRI markers. Pilots are expected to lead to subsequent NIH funding. More information on activities of the CBPH at <http://gero.usc.edu/CBPH/research.html>.

**Wednesday, June 8, 2022** - The 23rd Annual Harvard Nutrition Obesity Research Symposium: The Neurobiology of Eating Behavior in Obesity: Mechanisms and Therapeutic Targets. The Keynote talk will be given by Dr. Sadaf Farooqi of the University of Cambridge, who will be joined by many other accomplished researchers in the field. You can [register here](#) and/or visit our [event webpage](#) to learn more.

---

### LSUHSC Research Café

Mark your calendar for Research Café opportunities at LSUHSC this fall! You can find more information on the series and past meeting recordings [here](#).

All meetings will be held in person and via [Zoom](#).

**Wednesday, March 9, 2022, 12:00pm - 1:00pm, Research Strategy**

Lion's Building - 6th Floor - Large Lecture Room or via [Zoom](#).

This workshop will focus on the bulk of the research project and grant application. The focus will be placed on 1.) hypothesis and research design to answer a research question, data analysis, and the use of human subjects and vertebrate animals 2.) organization of this research for NIH submission into the three subsections of Significance, Innovation and Approach, and address Rigor and Reproducibility.

# Wellness Committee's 2nd Annual Steps Challenge

THE MAGAZINE RUNNERS HAVE BEEN WAITING FOR! FIT FOR LIFE

**LSU PEDS**

FEB 2022 | ISSUE 05

## STEPS CHALLENGE

### DOUBLE YOUR ENDURANCE

#### PRIZES INCLUDE

➔ 1st Place: iPad AND \$100 Figs gift card

➔ 2nd Place: MedStudy Flashcards AND \$100 Figs gift card

➔ 3rd Place: \$100 Figs gift card

**35**

Disclaimer: Equipment prizes are reserved for residents only, but faculty and fellows are eligible for Figs gift cards.

## WELLNESS COMMITTEE

### DOWNLOAD PACER APP

CHALLENGE CODE:  
BSW1785

PAGE 20

**EXCLUSIVE!**

### THE ULTIMATE MOVE FOR POWERFUL LEGS

PAGE 40

FEBRUARY 2022 | \$15.98



6 009800 461091 >

IG: @LSUPEDS

CHALLENGE DATES: FEBRUARY 1-28

It's that time of the year! The Wellness Committee's 2nd Annual Steps Challenge! We put together another challenge for the month of February for the entire Peds department. We hope you decide to join!

#### WHAT YOU NEED TO KNOW TO WIN

1. Download Pacer Pedometer & Step Tracker on your iPhone or Android
2. In the app, input this Challenge Code: BSW1785 **OR** follow this link: [https://www.mypacer.com/challenges/BSW1785?short\\_id=nNc0qH2](https://www.mypacer.com/challenges/BSW1785?short_id=nNc0qH2)
3. Steps are registered using the app via your phone or apple watch. Fitbit data collection requires premium app access. No manual entries will be accepted. Max steps: 50,000 per day.
4. Allowed activities: pedometer and GPS tracked walks, runs and hikes,

treadmill sessions, and guided workout sessions.

5. Join the challenge on or before **February 1st** to qualify for the prizes. Steps Challenge ends February 28th.
6. This challenge is open to the entire LSU Pediatrics department. Faculty/fellow/staff winners are eligible for Figs gift cards. However, equipment prizes are reserved for residents only.
7. Prizes:
  - 1st Place Prize: iPad **AND** \$100 Figs gift card
  - 2nd Place Prize: MedStudy Flashcards **AND** \$100 Figs gift card
  - 3rd Place Prize: \$100 Figs gift card

If you have any questions, comments or concerns, please reach out to Eden Haile at [ehaile@lsuhsc.edu](mailto:ehaile@lsuhsc.edu) or (703) 953-5611.

---

CHNOLA's childcare center open for children of providers/staff working at Children's Hospital ([flyer](#))

LSU Pediatrics Wellness Resources ([information](#))

## Department Anniversaries

The following employees celebrate another year with the department this month. Thank you for your continued service to LSU Pediatrics!

Isa Ashoor, 5 years

---

Looking for old newsletters?  
View the *Tuesday Tidbits* archive on the department's website. ([link](#))

Submit information to the next Tuesday Tidbits