

June 15, 2021



School of Medicine
Department of Pediatrics

LSU Pediatrics Tuesday Tidbits

Welcome to the Department of Pediatrics' weekly email blast designed to deliver important department information straight to your inbox.

Visit our
website

LSU Pediatrics Announcements



LSU Department of Pediatrics Residency Graduation Events

We hope you can join us for the

2020-2021 Resident Graduation, Part 1: Annual Report & Award Announcements*

Special Grand Rounds

Friday, June 18th 12:00pm-1:00pm

State Street Conference Center



If you aren't able to be there, please be sure to join the festivities using the zoom information below.

Zoom Option Available:

Meeting ID: 987 2113 4546

Password: lsupeds20

*Lunch will not be provided, so please feel free to grab something and bring it with you.

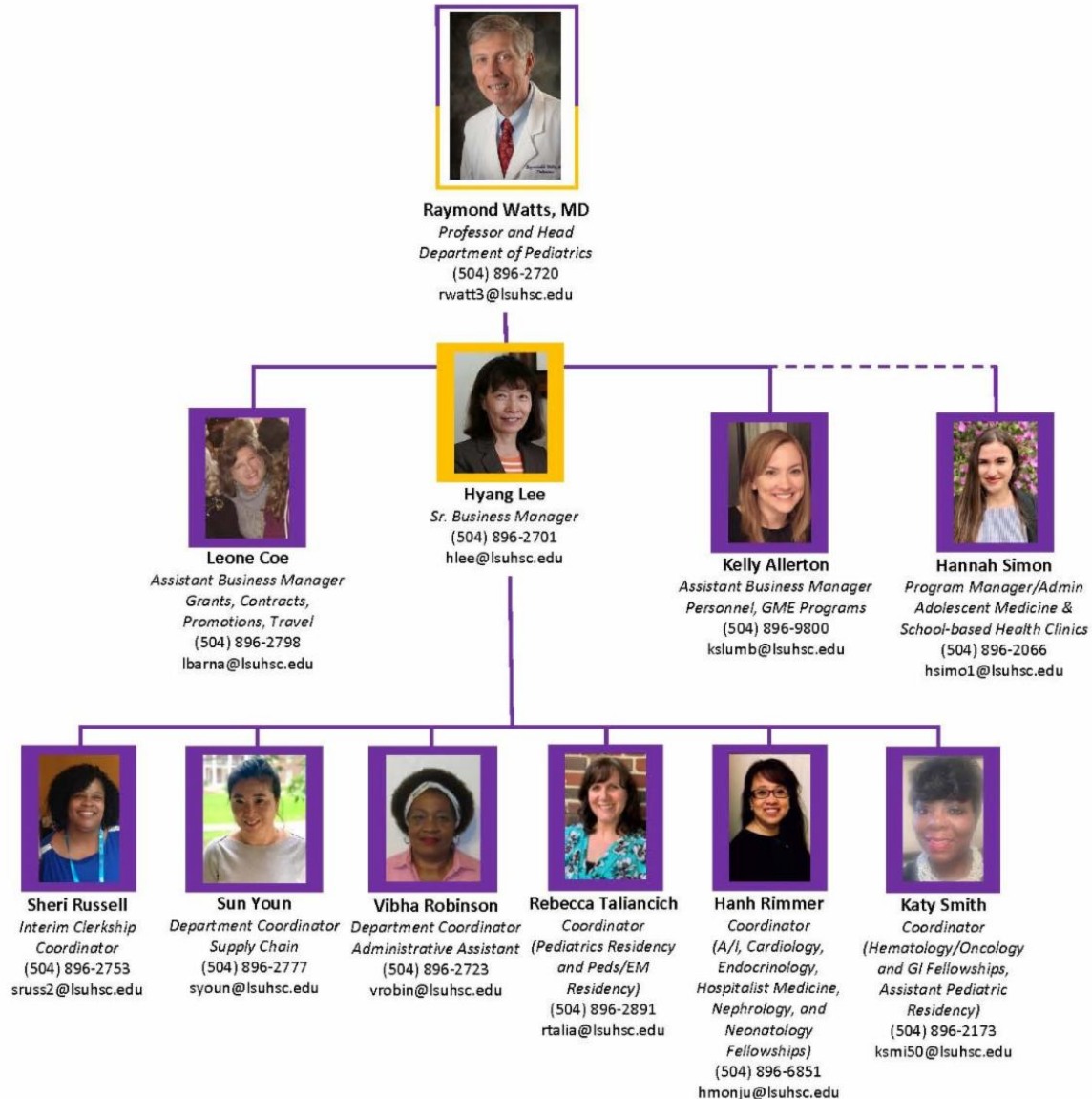
**OPEN
HOUSE!**

Mark Your Calendars for LSU Pediatrics' Open House

Chairman Dr. Raymond Watts and the LSU Pediatrics Administrative Staff will host an Open House on Thursday, July 8 from 11:30am - 1:00pm to introduce all new staff members to the department. Faculty are invited to stop by for some mingling. Boxed lunches will be available on the way out. Hope you can join us!

[View the updated Administrative Staff composite here.](#)

LSUHSC PEDIATRICS ADMINISTRATIVE STAFF:



Recent Publications

The Journal of ExtraCorporeal Technology recently accepted Dr. Hannah Bauer's article titled ECMO Support in Pre-B-Cell All for Disseminated Legionnaire's Disease: A Case Report for publication. M Malone served as a second author.



Congratulations to Pediatric Hospital Medicine fellow, Dr. Callie Roth, on her journal article review published to the national Society of Hospitalist Medicine website. Well done, Callie! <https://www.sohmlibrary.org/journal-club.html>



Resident Participation in Research A Message from Residency Leadership

The Pediatrics Residency Program is looking to increase residents' participation in research opportunities. The wide range of interest includes writing up a case report to participation in a major project. In an effort to provide the residents with a list of opportunities, Associate Program Director Dr. Christy Mumphrey has created a One Drive Excel document ([Faculty Research Projects.xlsx](#)). After clicking on the link, you may have to log in with your LSUHSC username and password. An excel form will open where you can type in your name, contact information and a brief description of the project you are looking for collaboration or assistance with. This information will automatically save in the document. Dr. Mumphrey will send this link out to faculty every six months as a reminder, but it can be updated at any time. A link to this document will also be sent to the residents and posted on the chief's website. It will be up to the residents to contact you if they are interested. Please reach out to [Christy](#) with any questions.

June is LGBTQ Pride Month

The Trevor Project's [National Survey on LGBTQ Youth Mental Health 2021](#) came out at the end of May and here are some highlights from it:

- In the past year, nearly half (**48%**) of LGBTQ youth have wanted counseling from a mental health professional, but did not receive it.
- **70%** of LGBTQ youth stated that their mental health was “poor” most of the time or always during COVID-19.
- **42%** of LGBTQ youth seriously considered attempting suicide in the past year, including more than half of transgender and nonbinary youth.
- Affirming transgender and nonbinary youth by respecting their pronouns and allowing them to change legal documents is associated with lower rates of attempting suicide.

FINDING JOY

Although LGBTQ youth described a number of challenges in their lives, they also listed hundreds of ways they find joy and strength, including:



Other Announcements

Revised LSU COVID Guidelines-important changes-please read ([Memo from Dr. Watts](#)) ([link to LSUHSC COVID Guidelines](#))

Latest edition of LSU SOM's *The Pulse*. ([link](#))

Grant Opportunity: Thrasher Research Fund ([information](#))

LSUHSC IRB's Researcher Education Series ([information](#))

LSU Proof-of-Concept Fund- LIFT2 Round 12 Announcement ([information](#))

Updated: Several Avenues of Stats Support, Education and Consultation ([information](#)) ([using stats models through CITI](#))

Importance of Time Certification ([information](#)) - learn more about why we certify time each month!

Important Notice: P-Card Restrictions on AAP Purchases ([information](#))

Use of Non-LSUHSC Email ([information](#))

New Pre-Review for Grant Proposals service offered by LSU([information](#))

Download the new Department Composites for this academic year!([Faculty](#), [Fellow](#), [Resident](#)).

FACULTY DEVELOPMENT

New video monthly

June Video: What is Difficult about Feedback?

Feedback is crucial for our learners. This video (6 minutes) from the University of Michigan directly addresses challenges to Giving Feedback - time, feeling it's subjective, worries about rapport, negative reviews from learners - and provides some concrete ways to overcome these barriers.

<https://www.coursera.org/lecture/clinical-skills/01-03-what-is-difficult-about-feedback-Q32ML>

Please send any suggestions or areas of faculty development need to acree1@lsuhsc.edu.

If you are interested in other forms of Faculty Development, visit these websites:

- [LSU Pediatrics Faculty Development Page](#)
- [LSUHSC GME Medical Education Development Site](#)

For questions or comments regarding Faculty Development, please contact [Amy Creel](#).

CHNOLA Announcements

Latest edition of CHNOLA Employee E-News ([link](#))

Report your flu-like symptoms

Please notify Employee Health at 504.962.6270 if you have any flu-like symptoms before reporting to work. Symptoms may include cough, congestion, headache, with or without fever.

Upcoming Events

Grand Rounds

For those who prefer an Outlook Calendar Reminder for Grand Rounds, please click [here](#) for directions that walk you through creating a recurring reminder.



Children's Hospital
New Orleans
LCMC Health

Virtual Pediatric Grand Rounds
2021 Ralph V. Platou, MD Visiting Professorship Lecture

Wednesday, June 16, 2021
Noon-1pm

ISPCTN: Enhancing Underserved Children's Health Through State-of-the-Art Clinical Trials

Jessica R. Snowden, MD
Chief, Division of Pediatric Infectious Diseases
Vice-Chair for Research, Department of Pediatrics
University of Arkansas for Medical Sciences
Associate Director of Clinical and Translational Research,
Arkansas Children's Research Institute

Please join Pediatric Grand Rounds from your computer, tablet or smartphone:

Zoom link: <https://lsuhsc.zoom.us/j/99010762984?pwd=bXJKZ3ZhSUFkQzdpajErbDd2Smt4Zz09#success>

Meeting ID: 990 1076 2984, Passcode: 018428

One tap mobile: +16465588656,,99010762984# US (New York)
+13017158592,,99010762984# US (Germantown)

Note: This is a live activity. The link is only valid from 12-1:00 pm and the presentation will not be recorded for CME or CEU credit. Please sign in with your full name and credentials in order to receive credit.

Objectives: At the conclusion of this activity, participants should be able to:

1. Identify rural health disparities and barriers to rural research.
2. Describe the mission and structure of the IDeA States Pediatric Clinical Trials Network (ISPCTN) within the Environmental Influences on Child Health Outcomes (ECHO) program.
3. Identify opportunities for collaboration, professional development, and improved research outreach in Oklahoma and other IDeA States.

Intended Audience: This activity is specifically directed towards the pediatrician, but it is open to all other interested physicians, residents, medical students and allied health professionals.

CME Statement: Children's Hospital is accredited by the Louisiana State Medical Society to provide continuing medical education for physicians. Children's Hospital designates this live activity for a maximum of 1.0 AMA PRA Category 1 Credit™. Physicians should claim only the credit commensurate with the extent of their participation in the activity.

CEU Statement: Children's Hospital is approved as a provider of nursing continuing professional development by Louisiana State Nurses Association, an accredited approver by the American Nurses Credentialing Center's Commission on Accreditation.

LSU Health
NEW ORLEANS
School of Medicine
Department of Pediatrics



Tulane University
SCHOOL OF MEDICINE
Department of Pediatrics

Join Grand Rounds through the Zoom Portal:

[https://lsuhsc.zoom.us/j/99010762984?](https://lsuhsc.zoom.us/j/99010762984?pwd=bXJKZ3ZhSUFkQzdpajErbDd2Smt4Zz09#success)

[pwd=bXJKZ3ZhSUFkQzdpajErbDd2Smt4Zz09#success](https://lsuhsc.zoom.us/j/99010762984?pwd=bXJKZ3ZhSUFkQzdpajErbDd2Smt4Zz09#success)

Meeting ID: Meeting ID: 990 1076 2984, Passcode: 018428

One tap mobile: +16465588656,,99010762984# US (New York)

+13017158592,,99010762984# US (Germantown)

Resident Senior Scholarly Presentations

Conference: Clinical Case Conference

Date/Time: Tuesday, June 15, 12:10pm – 1:00pm

Title: Facial Swelling

Presenter: Dr. Mayra Ramirez

Conference: Senior Scholarly Presentation

Date/Time: Wednesday, June 16, 12:10pm – 1:00pm

Title: Diversity, Equity, and Inclusion

Presenter: Drs. Rixney Reed and Matheson Johnson

Faculty's dedication to our trainees and effort to attend these sessions and contribute to the discussion is much appreciated. CME credit will be offered!

Zoom Information: Meeting ID: 987 2113 4546; Password: Isupeds20

[Click here for the zoom link.](#)

Congratulations, Dr. Knecht!

Congratulations to Dr. Michelle Knecht of the Neonatology Division who was married Saturday, June 5th to Lionel Lechler at St. Dominic Church.



Department Wellness

CHNOLA's childcare center open for children of providers/staff working at Children's Hospital ([flyer](#))

LSU Pediatrics Wellness Resources ([information](#))

Department Anniversaries

The following employees celebrate another year with the department this month. Thank you for your continued service to LSU Pediatrics!

Leone Coe, 29 years
Steffan Sernich, 14 years
Regina Zambrano, 9 years
Elizabeth Alonso, 7 years
Shubho Sarkar, 4 years

Looking for old newsletters?
View the *Tuesday Tidbits* archive on the department's website. ([link](#))

Submit information to the next Tuesday Tidbits

Department of Pediatrics | LSUHSC