

September 12, 2023



School of Medicine
Department of Pediatrics

LSU Pediatrics Tuesday Tidbits

Welcome to the Department of Pediatrics' weekly email blast designed to deliver important department information straight to your inbox.

Visit our
website

LSU Pediatrics Announcements

Women in Medicine Month

We have had two wonderful events so far this month and have many more to go! Be sure to add these upcoming events this week to your calendar and join us in celebrating women in medicine!

Early Career Women's Workshop

Presented by Dr. Ann Tilton, Professor
Friday, September 15th, 12-1pm, Lunch Provided
CH, Large Conference Rooms

Keynote Address

Presented by Susan Distefano, Executive Leadership Coach
Tuesday, September 19th, 12-1pm, Lunch served starting at 11:30am
CH, Worley Hall Conference Center

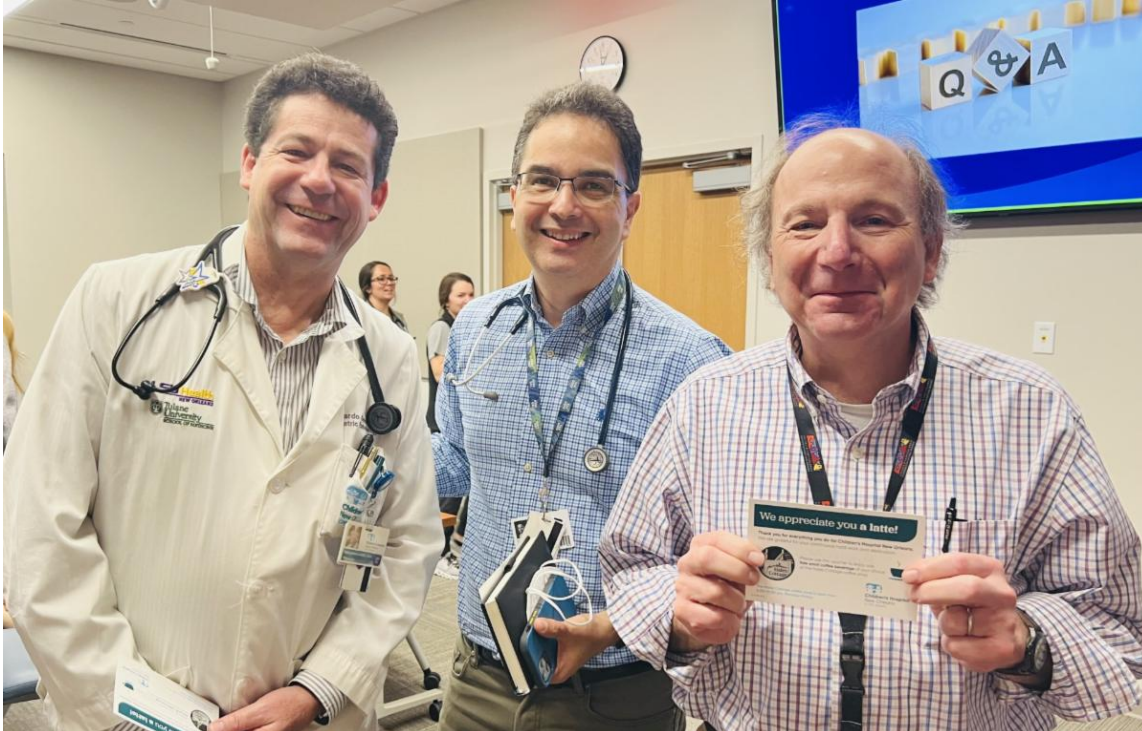
Women's Leadership Workshop

Presented by Susan Distefano, Executive Leadership Coach

[See here for flyer](#) with all September Women in Medicine events.

August Grand Rounds: Highest Attendance

Congratulations to Drs. Gomez, Aviles, and Hemenway: Winners of the highest attendance at August Grand Rounds among the LSU Division Heads! Be sure to join us for Grand Rounds this month every Wednesday at noon. Information can be found below under the CHNOLA Announcement Section of Tidbits.



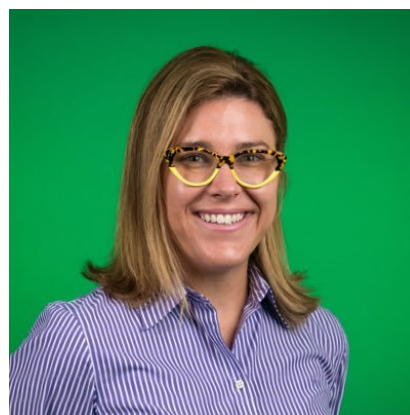
"See ya' Later, Alligator" - Celebrate Dr. Lexy Morvant

Please join us for a "See ya' later, Alligator" Party to Celebrate Dr. Lexy Morvant's contributions to LSU Peds and Children's Hospital

Location: Hales Cottage

Date: Tuesday, September 26th 3 - 430 pm

Followed by a social at The Chloe (4125 St. Charles Ave, 5 - 8 pm)



We Play Center Community Involvement Opportunity

The We PLAY Center will be hosting a vision and hearing screening event on Friday, October 6th at the WePlayCenter by TrainingGrounds and are seeking pediatricians to be on site to answer questions/concerns that families may have. Faculty or residents interested in volunteering at this community event are encouraged to contact Nadia Johnson (njohn8@lsuhsc.edu) and Sherelle Porter (sherelle@mytraininggrounds.org) for more information.



A Member of *All of Us* Southern Network

Research Happenings at LSU Health Science Center

Meet the team and learn about the

All of Us Research Program! *Get your free Ancestry + Health Report!* **On Site Enrollments Will Be Held**

Friday September 22nd, 8:00am - 2:00pm

Where: Suite #439 - 4th floor 478 S Johnson St. New Orleans, LA - LSUHSC

Create an account, complete the consent process and answer the surveys at joinallofus.org/lsu

Register to attend our event at:
<https://aouenrollmentnola92223.eventbrite.com>

Pre-registration is encouraged to ensure a visit of 30 minutes:



Scan Me to learn more or to start your enrollment process (consents & surveys)



\$\$\$ Receive a \$25 gift card for completed enrollment and specimen collection! \$\$\$

About *All of Us*:

By studying things like our genetic makeup, lifestyle, and environment, our study aims to find more tailored ways to keep us healthy. for more information call 504-568-5111

How do I take part?

- 1** 

Create an Account
- 2** 

Give Your Consent
- 3** 

Agree to Share Your Electronic Health Records
- 4** 

Complete the Consent to Get DNA Results
- 5** 

Answer Health Surveys
- 6** 

Have Your Measurements Taken (height, weight, blood pressure, etc.) and give blood and urine samples, if asked

After completing these steps, you'll receive GIFT CARDS!

Call For Abstracts: Southern Regional Meeting

Don't miss your opportunity to submit your abstract for the Southern Regional Meeting which will be held here in New Orleans from February 22-24, 2024. This meeting focuses on sharing research discoveries, networking with colleagues, and stimulating lifelong learning.

The deadline for submitting your abstract is October 6th. Please apply for all eligible awards at the time of abstract submissions. Please note that LSU trainees are eligible for the SSPR Trainee Travel Award.

[Link to SSPR Website](#)
[SRM Call for Abstract PDF](#)

NIH-funded ComPASS Program Research Opportunities



The NIH Common Fund has initiated an exciting program to address health disparities associated with adverse social determinants of health. Full details on the program can be found here: [ComPASS program](#)

Opportunities for academic investigators to collaborate and support community organizations in their execution of structural interventions have become available. See [this notice of intent](#) for more information. There is an estimated application due date of **October 23**.

Note that the NIH Common Fund project is not disease specific. Although NIDDK is not leading this program, we have internal contacts whom you may contact for additional information, if you'd like: Miranda Broadney, MD, MPH (Miranda.Broadney@nih.gov) & Raquel Greer MD, MHS (Raquel.Greer@nih.gov).

Share Your News!

The department wants to highlight your success! Please send any news to include in *Tuesday Tidbits* to [Sarah Brooks](#).



FACULTY DEVELOPMENT

New video monthly

September Video: Giving Feedback

Feedback is crucial for educating our learners. But it doesn't always come naturally. This video breaks down characteristics of effective feedback. And uses some scenarios to show do's and don'ts in clinical scenarios. With a run time of 12 minutes it's great to watch over lunch, during a break, or in small chunks when you have a minute to invest in education!

<https://vimeo.com/76300757>

Please send any suggestions or areas of faculty development need to acree1@lsuhsc.edu.

If you are interested in other forms of Faculty Development, visit these

websites:

- [LSU Pediatrics Faculty Development Page](#)
- [LSUHSC GME Medical Education Development Site](#)
- [ACGME LEARN](#)

For questions or comments regarding Faculty Development, please contact [Amy Creel](#).

CHNOLA Announcements

Grand Rounds

Please see the [attached flyer](#) for this week's presentation from Dr. Mohamad Masoumy.

A limited number of lunches will be provided for guests in the Large Conference Rooms.

Please note: to receive credit, folks must register on Eventbrite and attendee names as they appear in zoom should clearly identify the attendee. For example, "iPhone (2)" is difficult to assign credit to, whereas "Emma Simon," "E. Simon," or "Simon, E" are all acceptable. Please reach out with any questions.

[Register Here](#)

Zoom Link:

<https://lsuhsc.zoom.us/j/92060541657>



"Surgical Management of Cleft Patients from Birth to Adulthood"

Wednesday, September 13, 2023

Large Conference Rooms, Noon

You may join Pediatric Grand Rounds from your computer, tablet, or smartphone:
To receive CME or CEU Credit in person or online, you **MUST** register through EventBrite.
Register here: <https://www.eventbrite.com/o/chnola-office-of-medical-education-34160724807>

Zoom link: <https://lsuhsc.zoom.us/j/92060541657>
Meeting ID: 920 6054 1657

Note: This is a live activity. The link is only valid from noon - 1:00 PM and the presentation will not be recorded for CME or CEU credit. Please register and join the activity via EventBrite to receive credit.



Mohamad Masoumy, MD, MS, FACS, specializes in Craniofacial, Plastic and Reconstructive Surgery at Children's Hospital. He is board certified by The American Board of Plastic Surgery, a Fellow of the American College of Surgeons and is an Assistant Professor of Clinical Surgery in the Division of Plastic and Reconstructive Surgery at LSU Health. He has been part of the Craniofacial and Plastic Surgery team at Children's Hospital since 2019 and currently serves as the service line chief. A native of St. Louis, Missouri, Dr. Masoumy received his undergraduate and master's degrees at the University of Illinois Urbana-Champaign and his medical degree from the University of Missouri. He then completed General Surgery residency training at the Medical College of Georgia and a residency in Plastic Surgery at Emory University. Dr. Masoumy completed a Pediatric Plastic and Craniofacial Surgery fellowship at Texas Children's Hospital and Baylor College of Medicine.

Objectives: At the conclusion of this activity, participants should be able to:

1. Explain the role of the multidisciplinary team in cleft care.
2. Describe the series of potential surgeries a craniofacial surgeon performs for a patient with cleft lip/palate from birth to adulthood.
3. Understand some associated craniofacial anomalies seen in patients with a cleft lip/palate.

Intended audience: This activity is specifically directed towards the pediatrics, but it is open to all other interested physicians, residents, medical students, and allied health professionals.

Accreditation: Children's Hospital New Orleans is accredited by the Accreditation Council for Continuing Medical Education to provide continuing medical education for physicians.

Designation: Children's Hospital New Orleans designates this live activity for a maximum of 1.0 AMA PRA Category 1 Credit™. Physicians should claim only the credit commensurate with the extent of their participation in the activity.

CNE statement: Children's Hospital is approved as a provider of nursing continuing professional development by Louisiana State Nurses Association, an accredited approver by the American Nurses Credentialing Center's Commission on Accreditation, Provider #4003155. To receive credit, you must attend the entire program and submit a post program evaluation.



Department Wellness

CHNOLA's childcare center open for children of providers/staff working at Children's Hospital ([flyer](#))

LSU Pediatrics Wellness Resources ([information](#))

Other Announcements

Latest Edition of The Pulse ([link](#))

Resident Education

- Resident Participation in Research ([information](#)) - complete a shared spreadsheet with a brief description of the project you are looking for collaboration or assistance with.
- GeauxHealth! is a collaboration between LSU and Tulane residents to create a resource guide promoting medical trainee awareness of social determinants of health as well as providing a tool for easy use in clinic and during discharge planning. Check out more info [here](#) and on their website: <https://geauxhealth.org/>

Research and Grants

- Updated: Several Avenues of Stats Support, Education and Consultation ([information](#)) ([using stats models through CITI](#))
- New Pre-Review for Grant Proposals service offered by LSU ([information](#))

Administrative Reminders

- Importance of Time Certification ([information](#)) - learn more about why we certify time each month!
- Use of Non-LSUHSC Email ([information](#))
- Download the new Department Composites for the 2023-2024 academic year! ([Resident](#), [Fellow](#), [Faculty](#), and [Admin Staff](#)).

Department Anniversaries

The following employees celebrate another year with the department this month. Thank you for your continued service to LSU Pediatrics!

Renee Gardner - 30 years
Cori Morrison - 13 years
Dania Felipe - 11 years
Amanda Dumas - 10 years
Leslie Reilly - 9 years
Brooke Naranjo - 7 years
Tamara Bradford - 4 years
Ashley Stevens Farge - 4 years
Nathalie Medeiros - 4 years
Shannon Powell - 4 years
Kyle Fulton - 5 years
Elizabeth McDonough - 3 years

Looking for old newsletters?
View the *Tuesday Tidbits* archive on the department's website. ([link](#))

Submit information to the next Tuesday Tidbits

Department of Pediatrics | LSUHSC

LSU Pediatrics | 200 Henry Clay Ave, New Orleans, LA 70118

[Unsubscribe kslumb@lsuhsc.edu](mailto:kslumb@lsuhsc.edu)

[Update Profile](#) | [Constant Contact Data Notice](#)

Sent by kslumb@lsuhsc.edu powered by



Try email marketing for free today!