

2008 New Orleans Pediatrics Board Review™

August 18 – 23, 2008

About the New Orleans Pediatrics Board Review™:

- It's a comprehensive no-frills course that will prime you for the Boards
- It's a streamlined review to refresh and update your diagnostic and therapeutic skills
- It's certified by the AAP for your maintenance of certification home study
- It's strategically timed for optimal Board preparation – experience shows that 8-12 weeks between the Review and the exam is ideal (2008 Boards: October, 27, 2008) [Information source: The American Board of Pediatrics (919) 929-0461, www.abp.org]
- A maximum of 47 AMA PRA Category 1 Credit(s)™ available

Each year, we reassess the needs of participants and expand or modify the Review. Over the past twenty-two years we have enhanced our review with:

- Increased number of evening sessions in a small-group, interactive format
- End-of-course practice examination simulating the Board exam format
- Test-taking and study techniques revised yearly
- Increased emphasis on case presentations as a teaching tool
- Daily photo identification quiz to improve rapid recognition of testable pediatric entities
- “String of Pearls” session to re-emphasize key topics
- LSU Pediatric Radiology Board Review on CD-ROM

NEW This Year:

- Audio listening stations for question and answer practice
- Re-written sample question book
- Re-written practice examination

Program Overview:

This conference is designed to help prepare pediatricians for participation in the American Board of Pediatrics certification examination and to prepare practicing physicians for re-certifying.

Target Audience:

The target audience for this activity includes pediatric residents, practicing pediatricians (recertification now required), and any health care professionals interested in reviewing pertinent basic concepts in pediatrics and the latest information on recent developments in diagnosis and treatment of conditions seen in every day pediatric practice.

Learning Objectives:

At the conclusion of this educational activity, the participant should be better able to:

- Demonstrate increased knowledge of general pediatrics
- Identify areas of weakness requiring further study
- Recognize the format and style of Board questions
- Apply the practice test taking skills acquired during the course

Sunday, August 17

Early Bird On-Site Registration

4:00 – 6:00 PM

Monday, August 18

Registration

7:00 – 8:15 AM

Introduction

8:15 – 8:30 AM

Test Preparation

8:30 – 9:00 AM

Test-taking and study strategies

Infectious Disease

9:00 AM – 12:30 PM

Bone and joint infections, HIV/AIDS, evaluating recurrent infections, antiviral drugs, sexually transmitted diseases, rickettsial, fungal, and parasitic diseases (congenital and perinatal) infections, skin and skin structure infections, urinary tract infections, antibiotic therapy, managing meningitis and sepsis, tuberculosis therapy, vaccines

Neurology

1:30 – 3:40 PM

Seizures, EEG pattern review, evaluation of the child with coma, brain death, progressive weakness in infancy, acute ataxia, headaches in children, migraines and brain tumors

Gastroenterology and Nutrition

3:55 – 6:50 PM

Jaundice, biliary atresia, GI bleeding, peptic ulcer, TPN, diarrheal diseases, malabsorption syndromes, ulcerative colitis, Crohn's disease

Tuesday, August 19

Endocrinology

8:00 AM – 12:00 PM

Evaluation of growth failure and normal and abnormal sexual development, hyper- and hypothyroidism, hypoglycemia, diabetes mellitus, management of ketoacidosis

Surgery

1:00 – 2:00 PM

Diagnostic problems and malignancies in the newborn (including neuroblastoma and Wilms' tumor), evaluation of the child with abdominal pain



Orthopedics

2:00 – 2:45 PM

Evaluation of lower limb deformities, bone pain, bone cysts, bone tumors, scoliosis and back pain

Urology

2:45 – 3:15 PM

Circumcision, cryptorchidism, hypospadias, vesicoureteral reflux, and urologic anomalies, renal transplantation, enuresis

Otolaryngology

3:30 – 4:30 PM

Stridor and upper airway obstruction, otitis media, mastoiditis, left lip and palate, recurrent epistaxis

Ophthalmology

4:30 – 5:30 PM

Retinopathy of prematurity, amblyopia, current screening techniques, retinoblastoma, ocular emergencies, the “red eye”

Pulmonology

5:40 – 6:35 PM

Diagnosing and managing the child with asthma, acute respiratory infections, obstructive sleep apnea, acute respiratory failure, shock and critical care

Wednesday, August 20

Ambulatory Pediatrics

8:00 – 10:45 AM

Physical/sexual child abuse, sports medicine, “over use” injuries, bone tumor diagnosis, poisoning, substance abuse, encopresis, animal bites, other outpatient problems

Rheumatology

10:45 – 11:45 AM

Juvenile rheumatoid arthritis, Kawasaki syndrome, Lyme disease, lupus, rheumatic fever

Behavioral and Developmental Pediatrics; Psychiatry

12:45 – 2:45 PM

Normal development, “red flags”, developmental testing and interpretation, mental retardation, ADHD, psychological and psychiatric problems, anxiety, depression

Dermatology

3:00 – 4:30 PM

Recognizable entities (erythema multiforme, atopic dermatitis, Job syndrome), psoriasis, hair loss, common fungal infections, acne, viral exanthems, warts/moles

Fowler Memorial Lecture

4:45 – 5:45 PM

Guest speaker – Topic to be announced



Thursday, August 21

Nephrology

8:00 – 10:30 AM

Glomerular disease in children, hemolytic uremic syndrome, hypertension, renal tubular disorders, proteinuria, hematuria, renal failure, fluid and electrolyte management (a review with cases)

Allergy and Immunology

10:45 AM – 12:35 PM

The immunodeficiencies: a comprehensive review, HIV infection and treatment in children, allergies

Hematology and Oncology

1:35 – 4:05 PM

Anemia in infants and children, leukemia, thrombocytopenia and bleeding disorders, solid tumors, slide quiz

Radiology

4:05 – 5:45 PM

A practical approach to the radiologic diagnosis of common pediatric problems by body system and the use of diagnostic modalities

Friday, August 22

Genetics

8:00 – 10:00 AM

Importance and types of genetic disorders (Mendelian, polygenic/multifactorial, chromosomal), recognizable syndromes, extensive visual review, inborn errors of metabolism

Cardiology

10:15 AM – 12:30 PM

Congestive heart failure and cardiogenic shock, congenital heart disease, acquired heart disease including rheumatic fever, EKG interpretation (common arrhythmias and conduction disturbances)

Adolescent Medicine

1:30 – 2:45 PM

Normal growth and development, breast masses, eating disorders, homosexuality, adolescent suicide, menstrual irregularity, substance abuse and delinquency

Neonatology

2:45 – 5:20 PM

High risk deliveries, effects of maternal drug use and illness, neonatal jaundice, apnea and seizures, intrauterine growth retardation, respiratory distress, necrotizing enterocolitis, cyanosis in the newborn period, SIDS

Saturday, August 23

Written Practice Exam

8:00 – 9:00 AM

String of Pearls

9:15 AM – 1:00 PM

Review of answers and pearls

Audio, still photography and/or video recording of the Review is not allowed.

Registration Form

2008 New Orleans Pediatrics Board Review™

August 18 – 23, 2008

To register for this educational activity, please phone, fax, OR mail your completed registration form with payment to:

- **Phone:** please call (504) 568-2263
- **Fax:** fax the completed registration form to (504) 568-4008
- **US Mail:** mail the completed form to LSUHSC – Institute of Professional Education, 533 Bolivar, Room 342C, New Orleans, Louisiana 70112

Please be sure to provide your email address as correspondences regarding this course are sent electronically.

Name: _____
(First) (MI) (Last) (Degree)

Address: _____
(Street) (City) (ST) (Zip)

Daytime Phone: _____ Email: _____

How did you hear about our course? _____

Interactive Evening Session

Please rank your preferences for the Interactive Evening Session (1-7; 1 = most preferred). You will be assigned to two (2) topics only. The session will be held 7:00 – 8:00 PM and 8:00 – 9:00 PM Tuesday through Thursday. In order to keep the session interactive, the number of participants will be limited to 40 per session. We cannot offer attendance to more than two (2) sessions per registrant.

___ Infectious Diseases (Tuesday, Wednesday) ___ Endocrinology (Tuesday – Thursday) ___ Emergency Department (Wednesday)
___ Hematology and Oncology (Wednesday, Thursday) ___ EKGs (Wednesday, Thursday) ___ Critical Care (Tuesday)
___ Neonatology (Monday)

Registration Fees (please check one)

Physician-In-Practice/Fellow

- \$775 (postmarked by June 20, 2008)
- \$875 (postmarked after June 20, 2008)
- \$975 (on-site registration)

Resident

- \$675 (postmarked by June 20, 2008)
- \$775 (postmarked after June 20, 2008)
- \$875 (on-site registration)

CD-ROM ONLY

- \$75 – I can not attend the Review, but would like to receive the Radiology CD-ROM.

Registration fees include tuition, comprehensive course handouts, two pre-assigned evening sessions, Radiology CD-ROM, continental breakfast and refreshments during breaks.

Payment (please check one)

- Check** – My check (in US funds) payable to LSUHSC-IPE is enclosed.

Please phone or fax your registration after July 25, 2008 to avoid postal delays.

- Credit Card** – I will charge my course fee as indicated below.

Please complete the following to use a credit card as payment for course registration:

Master Card **Visa** **American Express**

Charge this amount: \$ _____

Card Number: _____ Exp Date: _____ Security Code: _____

Signatures (required): _____

Credit Cardholder (if different from above): _____

Additional information will follow via email upon receipt of your registration

The registration fee is refundable (less at \$100 administrative fee) upon written request postmarked by July 25, 2008. Registrations submitted after July 25, 2008 are non-refundable due to guarantees and commitments in conjunction with the planning of the course.

- We reserve the right to make changes to the schedule; we will announce any changes at the Board Review.
- This form may be photocopied for additional registrations.
- If you are in need of ADA arrangements, please attach a written description of needs or telephone the LSUHSC-IPE office at (504) 568-2263 or e-mail cme@lsuhsc.edu
- I have arranged my hotel reservations. InterContinental Orleans @ (504) 525-5566 or (800) 972-2791. Please do not send payment for your hotel room to the LSUHSC – IPE.

Interactive Evening Sessions

EKGS, Endocrinology, Infectious Diseases, Neonatology, Hematology/Oncology, Critical Care, Poisoning

Each registrant will be able to attend two evening session on topics of his/her choice. Topic assignments will be on a first-come, first-served basis, according to ranked preferences indicated on the registration form. We will conduct sessions Tuesday – Thursday from 7:00 – 9:00 PM (limited to 40 registrants per session). These sessions are designed to help stimulate audience interactions. Final session assignments will be distributed at the registration desk when you arrive at the conference.

Registration

Physicians-in-Practice/Fellows: \$775 (postmarked after June 20, 2008: \$875; on-site: \$975)

Residents: \$675 (postmarked after June 20, 2008: \$775; on-site: \$875)

This fee includes:

- Tuition
- Comprehensive course handouts
- Two evening sessions
- Radiology CD-ROM
- Continental breakfast
- Refreshments during breaks

Payment (check or credit card) must accompany the completed registration form. Your registration (with payment) must be received/postmarked by June 20, 2008 in order to receive the early-bird registration rate. Previous attendees of the Review (with proof of attendance) will receive an additional \$50 discount.

You may register for this activity via phone, fax, **OR** US mail

- Phone: please call (504) 568-2263
- Fax: fax the completed registration form to (504) 568-4008
- US Mail: mail the completed form to LSUHSC – Institute of Professional Education, 533 Bolivar, Room 342C, New Orleans, Louisiana 70112

If you are registering after July 25, 2008 please do not mail your registration. We suggest that you fax or phone your registration to avoid any delays that may occur in the US Postal Service. **Registrations submitted after July 25, 2008 are non-refundable** due to guarantees and commitments in conjunction with the planning of the course.

Cancellation

The registration fee is refundable (less at \$100 administrative fee) upon written request postmarked by July 25, 2008. No refunds can be granted thereafter due to guarantees and commitments in conjunction with the planning of the Board Review. In addition, registrations submitted after July 25, 2008 are non-refundable due to guarantees and commitments in conjunction with the planning of the course.

LSUHSC – Institute of Professional Education reserves the right to cancel this course for any reason at any time. In that event, full refunds of paid course registration fees will be given. However, LSUHSC, LSUSOM, IPE, LSUSOM-NO Med. Alumni Assoc., and others involved in this course are not responsible for any related costs or expenses, including (but not limited to) cancellation/change charges assessed by airlines, hotel fees, etc.

Meeting Location and Lodging

This meeting will be held at the InterContinental New Orleans, 444 St. Charles Avenue, New Orleans, LA 70130 – Local phone (504) 525-5566 or (800) 972-2791.

Special Review room rates at the InterContinental New Orleans will be in effect until 5:00 PM on July 18, 2008. Any reservations made after this time will be subject to availability. So register early to assure receipt of the special room rate and availability at the InterContinental New Orleans.

Please request check-in/check-out and cancellation information when making your hotel reservation. Neither LSU School of Medicine New Orleans, Institute of Professional Education, nor LSU Health Sciences Center is responsible for airline or hotel reservations.

Sponsor

The Review is sponsored by the Department of Pediatrics, Louisiana State University School of Medicine, New Orleans.

NEW THIS YEAR

◀ Audio listening stations for question and answer practice

📖 Updated sample question book

✍️ New practice exam

Facilitator

The Review is facilitated by the Louisiana State University Health Sciences Center Institute of Professional Education.

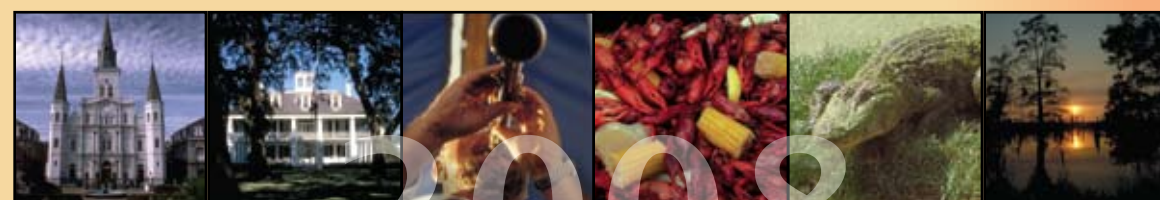
Accreditation and Designation of Credit

Louisiana State University School of Medicine, New Orleans (LSUSOMNO) is accredited by the Accreditation Council for Continuing Medical Education to provide continuing medical education for physicians. LSUSOMNO designates this educational activity for a maximum of 47 AMA PRA Category 1 Credits™. Physicians should only claim credit commensurate with the extent of their participation in the activity.

The American Medical Association has determined that non-US licensed physicians who participate in this CME activity are eligible for AMA PRA Category 1 Credit™.

Faculty Disclosure

It is the policy of the LSUSOMNO to ensure balance, independence, objectivity, and scientific rigor in all its sponsored educational activities. All faculty participating in continuing medical education activities sponsored by the LSUSOMNO are required to disclose to participants any real or apparent conflict of interest related to the content of their presentations. Disclosure of faculty commercial relationships will be made known before the activity begins. Faculty are also expected to openly disclose any discussion of off-label and/or investigational uses of drugs in their presentations.



2008

Need More Information?

New Orleans Pediatrics Board Review

LSUHSC – Institute of Professional Education

533 Bolivar, Room 342C • New Orleans, LA 70112

Phone: (504) 568-2263 • Fax: (504) 568-4008

Email: cme@lsuhsc.edu • <http://www.medschool.lsuhscc.edu/pediatrics>

Many of the scenic photographs courtesy of the Louisiana Office of Tourism

Non-Profit
U.S. Postage
PAID
Permit No. 2194
New Orleans, LA

LSU Health Sciences Center
Institute of Professional Education
533 Bolivar, Room 342C
New Orleans, LA 70112

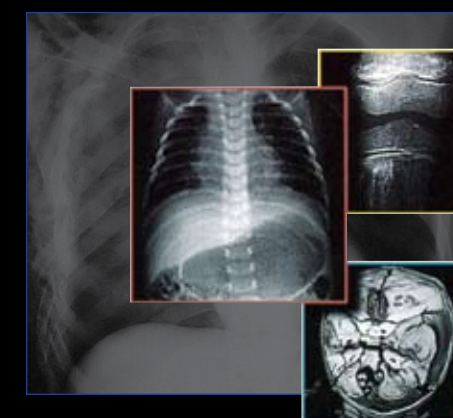
Pediatric Radiology on CD-ROM

Participate in part of the Board Review in your home or office.

The most visual part of the New Orleans Review, LSU Pediatric Radiology Board Review, is now on CD-ROM for both Windows and Macintosh. X-rays, CTs, MRIs, scans, and Ultrasounds plus copious illustrations and comments by Kenneth Ward, MD are on the LSU Pediatric Radiology Board Review CD-ROM. Seven areas are covered from chest and airway to neonatology with over 170 images useful for the Boards. The CD-ROM is available to all registrants and is included in the Course materials at no additional cost.

Even if you're not attending the Course, you may purchase the CD-ROM for \$75

(handling costs included).



To purchase the CD-ROM, please use the Course registration form. You will receive the CD-ROM no later than **August 29, 2008**.



New Orleans

Pediatrics Board Review™

Louisiana State University School of Medicine



August 18 – 23, 2008

InterContinental New Orleans

444 St. Charles Avenue • New Orleans, Louisiana



This activity is accredited to provide 47 AMA PRA Category 1 Credits™