

February 11, 2025



School of Medicine
Department of Pediatrics

LSU Pediatrics Tuesday Tidbits

Welcome to the Department of Pediatrics' weekly email blast designed to deliver important department information straight to your inbox.

Visit our
website

LSU Pediatrics Announcements

Support LSU Pediatrics at SSPR

The SSPR Southern Regional Meeting is this week at the Intercontinental Hotel in New Orleans. For those attending, a list of LSU Pediatrics posters and oral presentations is provided [here](#). Hopefully this will make it easier to find our LSU Peds presenters and offer your support!



For SSPR members, online **voting for officers is open now**. You do not have to attend the meeting in order to cast your vote. Please consider voting for **Luke Wall** for SSPR Council Member by casting your vote via the SSPR website here.

[SSPR | Southern Society for Pediatric Research \(southern-spr.org\)](https://southern-spr.org)

Pediatric Research Day - Call for Abstracts Due February 28th

Pediatric Research Day



2025 Pediatric Research Day

Join Manning Family Children's Hospital, LSU Pediatrics, LSU Surgery, and Tulane Pediatrics as we celebrate Pediatric Research Day on Friday, May 2 from 8 am - 5 pm in Worley Hall. Faculty and trainees of all levels will be invited to share their research.



**Friday,
May 2, 2025**



**8:00 am -
5:00 pm**



Submit Abstract

<https://app.oxfordabstracts.com/stages/76652/submitter>

[Submission Link](#)

New Faculty and Admin Staff Composites

Please see below for updates faculty and Administrative Staff Composites. These will also be linked at the bottom in "Other Announcements" of Tidbits each week.

[Faculty](#)

[Admin Staff](#)

LSUHSC Faculty Performance Evaluations Open

[Faculty Annual Performance Evaluations](#) opened February 3, 2025 for the review period January 1, 2024 – December 31, 2024. Division Heads will be scheduling evaluation meetings over the next several weeks. All evaluations must be complete and submitted to Kelly Allerton by **Thursday, March 6**.

A few reminders:

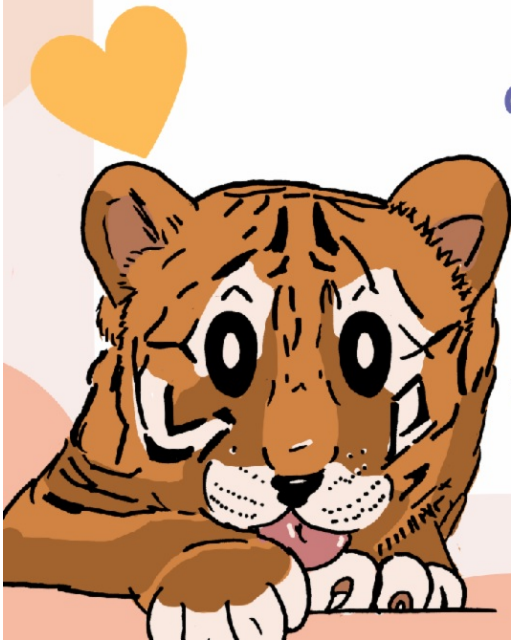
1. If you complete a self-evaluation, please be sure to send it to Kelly Allerton in addition to your Supervisor. The self-evaluation must be uploaded along with your final evaluation.
2. Part-time faculty are included and must be evaluated.
3. Be sure to complete the evaluations in Adobe Acrobat, NOT in an internet browser and not by hand. If the form is like last year's, you'll be able to edit the percentages in the first three categories which affects the total weight of the overall evaluation rating.
4. Newly Hired Faculty: HR's [Performance Evaluation Policy](#) states that newly hired employees who have served in their positions for a minimum of 3 full calendar months during the performance year are required to be evaluated. It is recommended for employees who have been employed for less than 3 months to undergo a performance evaluation. In that case, if a supervisor believes they have had insufficient time to observe the employee's performance, no evaluation is required for the current cycle.

HR is offering a Performance Evaluation Training on February 11, 2025 1:00pm to 2:00pm, Human Development Center Room 405. This training is being offered in a hybrid format. If you wish to join through Zoom, please use the following link: <https://lsuhsc.zoom.us/j/97596141160>. If you wish to join in person, please reserve your spots below: [Downtown Campus](#).

Resident Clinic Book Drive

We accept new or gently used books in Spanish or English appropriate for any age children or teens!

If you would prefer to donate cash, please venmo @William-Morgan-20, all donations will be put towards new books.



Order free
CDC pediatric
books here:



Take a look
at our
wishlist here:



FACULTY DEVELOPMENT

New video monthly

February Video: Bedside Teaching

Let's focus on making our bedside rounds more educational. This short video (**2 minute 4 seconds**) highlights ways we can make bedside rounds more effective for teaching. Improve your teaching toolbox in less time than a commercial break.

<https://www.youtube.com/watch?v=iiqB-eQcbT8>

Please send any suggestions or areas of faculty development need to acree1@lsuhsc.edu.

If you are interested in other forms of Faculty Development, visit these websites:

- [LSU Pediatrics Faculty Development Page](#)
 - [LSUHSC GME Medical Education Development Site](#)
 - [LSUHSC Faculty Development and Evaluation Committee's Tiger Bites Series](#)
 - [ACGME LEARN](#)
-

For questions or comments regarding Faculty Development, please contact [Amy Creel](#).

CHNOLA Announcements

Grand Rounds



"Understanding and Navigating Medical Distrust and Mistrust"

Wednesday, February 12th, 2025
Hospital Large Conference Rooms, Noon

You may join Pediatric Grand Rounds from your computer, tablet, or smartphone:

Zoom link: <https://lsuhsc.zoom.us/j/92702233054>

Meeting ID: 927 0223 3054

When you exit the Zoom meeting, you will be prompted to complete a short form to provide your name and email address. By completing the form your attendance will be counted. Thank you for your cooperation.



Tina Simpson, MD, MPH, is board-certified in Adolescent Medicine and Pediatrics. She earned dual undergraduate degrees in Biology and Chemistry from the University of New Orleans. Dr. Simpson studied medicine at the University of Alabama School of Medicine and completed her Masters of Public Health from the University of Alabama at Birmingham. She completed her Pediatrics residency and Adolescent Medicine fellowship training at UAB as well. She served as faculty and a leader in medical education for several years at UAB. In October 2022, Dr. Simpson joined the faculty at Tulane University as Professor of Pediatrics, Section Chief of Adolescent Medicine, and the Chief Clinical Diversity Officer for the School of Medicine.

Objectives: At the conclusion of this activity, participants should be able to:

1. Define medical distrust and mistrust
2. Explain the historical context contributing issues of medical mistrust and distrust
3. Discuss ways to address medical distrust and mistrust in clinical settings

Intended audience: This activity is specifically directed towards the pediatric provider, but it is open to all interested physicians, residents, medical students, nursing, and allied health professionals.

Accreditation Children's Hospital New Orleans is accredited by the Accreditation Council for Continuing Medical Education to provide continuing medical education for physicians.

Designation Children's Hospital New Orleans designates this live activity for a maximum of 1.0 AMA PRA Category 1 Credits™. Physicians should claim only the credit commensurate with the extent of their participation in the activity.

CNE statement: LCMC Health Nursing Education Committee is approved as a provider of nursing continuing professional development by Louisiana State Nurses Association - Approver, an accredited approver by the American Nurses Credentialing Center's Commission on Accreditation. LSNA Provider No. 4002636

ADA Statement: In compliance with the Americans with Disabilities Act, if special accommodations are needed, please notify Denise Graham at 504-896-9431.





"From Calling to Commitment: Our Stories"

Thursday, February 13th, 2025

Worley Hall, 12-1pm

[Click here to register.](#)

A unique and important contribution to the culture within healthcare organizations, the Schwartz Rounds allow for interdisciplinary conversation about some of the most complex and compelling dilemmas that health professionals face as they balance compassionate care with the strenuous demands of their daily work. For more information, [click here](#).

Session Panelists:



Cori Morrison, MD
Hematology/Oncology



Lisa Legeaux, PMHNP-C
ThriveKids



Trey Roberts, MHA, MSW, LCSW
Social Work, PICU

Objectives: At the conclusion of this activity, participants should be able to:

- Describe the social, emotional, ethical, and personal issues that arise during the care of patients and their impact on caregivers.
- Demonstrate enhanced communication with patients, family members and colleagues.
- Value opportunities to explore and understand multiple perspectives across disciplines.
- Value opportunities to provide and receive support from other members of our healthcare community.
- Model behaviors of nonjudgmental listening and respect for learners.

Intended audience: This activity is specifically directed toward members of the ThriveKids, Behavioral Health, Hematology/Oncology, and PICU teams, and medical residents and fellows.

Accreditation Children's Hospital New Orleans is accredited by the Accreditation Council for Continuing Medical Education to provide continuing medical education for physicians.

Designation Children's Hospital New Orleans designates this live activity for a maximum of 1.0 AMA PRA Category 1 Credits™. Physicians should claim only the credit commensurate with the extent of their participation in the activity.

An application is pending for 1.0 hr General Education, NASW-LA

ADA Statement: In compliance with the Americans with Disabilities Act, if special accommodations are needed, please notify Denise Graham at 504-896-9431.



Need more information regarding the recent Epic upgrades? Here are some helpful guides on the recent changes: [Ambulatory](#), [Beacon](#), [ED](#), [Inpatient](#), [POTC Lactate and Blood Gas Ordering](#)

Department Wellness

CHNOLA's childcare center open for children of providers/staff working at Children's Hospital ([flyer](#))

LSU Pediatrics Wellness Resources ([information](#))

Other Announcements

Latest Edition of The Pulse ([link](#))

Resident Education

- Resident Participation in Research ([information](#)) - complete a shared spreadsheet with a brief description of the project you are looking for collaboration or assistance with.

Department Biostatistician

- Department Biostatistician, Dr. Zhide Fang, is available to provide biostatistical support to faculty, fellows, and residents. Please see below for revised scheduling procedures:
 1. Email Zhide Fang at zfang@lsuhsc.edu
 2. Provide brief explanation of the service you need and, if applicable, times you are able to meet
 3. Dr. Fang may request additional information depending on the nature of your request
 4. Asking simple, direct questions through email is welcome at any time, but appointments are preferred

Administrative Reminders

- Importance of Time Certification ([information](#)) - learn more about why we certify time each month!
- Use of Non-LSUHSC Email ([information](#))
- Download the Department Composites for the 2024-2025 academic year! ([Resident](#), [Fellow](#), [Faculty](#), and [Admin Staff](#)).
- The Tulane Resident Composite for the 2024-2025 school year is available [here](#). Faculty members who would like a laminated copy can contact Tulane's Chief Residents, [Taylor Katt](#) and [Genesis Ricard](#).
- LSU travel policy and procedures ([information](#))
- Download the new Clinical [Handbook](#) and Pediatric Clerkship [Objectives](#) for Faculty, Residents, and Fellows.
- Grant Support is available through an LSU/Hanover [collaboration](#) - more information is available [here](#).
- [LSUHSC Library Research Resources](#)

Department Anniversaries

No Department Anniversaries this month!

Share Your News!

The department wants to highlight your success! Please send any news to include in *Tuesday Tidbits* to [Michele Hallinan](#).



Submit information to the next Tuesday Tidbits

Looking for old newsletters?
View the *Tuesday Tidbits* archive on the department's website. ([link](#))

Department of Pediatrics | LSUHSC

LSU Pediatrics | 200 Henry Clay Ave | New Orleans, LA 70118 US

[Unsubscribe](#) | [Update Profile](#) | [Constant Contact Data Notice](#)



Try email marketing for free today!