

Keynote Speaker



Mark L Unruh, MD
Professor of Medicine
Section Chief – IM Division of Nephrology
University New Mexico–Health Sciences
Center
Albuquerque, NM

Symposium Director



Erwin Aguilar, PharmD, MSc, MPH
Associate Professor of Research
Department of Internal Medicine, Section
of Nephrology and Hypertension
Section of Geriatric Medicine and
Department of Family Medicine
LSU Health New Orleans

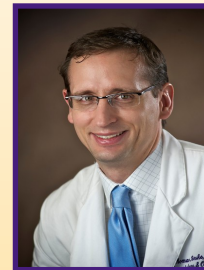
Invited Course Faculty*

Course faculty are not confirmed on an activity until their disclosure and/or any potential conflicts of interest are managed in accordance with ACCME Standards for Commercial Support. Disclosures of financial relationships must be made during the planning stages of the activity, and all relationships thus disclosed are communicated to the audience prior to the activity. Faculty/planners refusing to disclose will be removed from program. Additionally, faculty may be subject to substitution. As of printing, this program was accurate.

LSU Faculty Moderators



Efrain Reisin, MD, FACP, FASN, FASH –Moderator
Victor Chaltiel Professor of Medicine
Chief, Section of Nephrology and
Hypertension
Department of Internal Medicine
LSU Health New Orleans



Thomas Reske, MD, PhD - Moderator
Assistant Professor of Clinical Medicine
Section of Hematology and Oncology
Section of Geriatric Medicine
Acting Chief, Section of Geriatric Medicine
Department of Internal Medicine
LSU Health New Orleans

LSU Faculty



James H. Diaz, MD, MPH, DrPH, FACMT
Professor and Head, Environmental and
Occupational Health Sciences
LSUHSC-NO School of Public Health
Professor of Anesthesiology
LSU Health New Orleans



Jonathan G. Owen, MD
Assistant Professor of Clinical Medicine,
Department of Internal Medicine
Section of Nephrology and Hypertension
LSU Health New Orleans



Stephen Morse, DO, MPH
Associate Professor of Clinical Medicine
Department of Internal Medicine
Section of Nephrology and Hypertension
LSU Health New Orleans



Avanelle Jack, MD
Assistant Professor of Clinical Medicine,
Department of Internal Medicine
Section of Nephrology and Hypertension
LSU Health New Orleans

LSU Health
NEW ORLEANS
School of Medicine

Earn up to
4.25 CME
or CNE
credits!

LSU Department of Internal Medicine Sections of Nephrology
and Hypertension & Geriatric Medicine present

LSU Geriatric Nephrology Symposium

CME/CNE ACTIVITY

Tuesday, September 13, 2016

7:00 a.m.– 1:00 p.m.

LSUHSC Nursing & Allied Health Building
1900 Gravier St., Seminar Room 1

Symposium Director:

Erwin Aguilar, PharmD, MSc, MPH
Associate Professor of Research
Department of Internal Medicine, Section of Nephrology and Hypertension
Section of Geriatric Medicine
Department of Family Medicine
LSU School of Medicine
LSU Health New Orleans
1.504.568.8655
eaguil@lsuhsc.edu



Agenda

LSU Geriatric Nephrology Symposium CME/CNE ACTIVITY

Tuesday, September 13, 2016 • 7:00 am-1:00 pm
LSUHSC School of Nursing & Allied Health Building
1900 Gravier St., Seminar Room 1
New Orleans, LA 70112

About the Symposium

This symposium will focus on the progression of renal disease in the elderly and the advances in geriatric nephrology clinic practice that may improve caring for patients. The symposium is a half-day designed to expand the communication between the geriatrician, nephrologist, nursing and other health care providers managing patients with kidney disease. Polypharmacy consideration may further complicate treatment options for health care providers.

What You'll Learn

Learners will have the opportunity to engage in didactic lectures from experts in geriatrics, nephrology, internal medicine and family medicine. As a result of attending this activity, learners will:

- Construct new research questions based on updated scientific and clinical advances in geriatric nephrology-related disciplines.
- Learn strategies to address renal toxicity due to polypharmacy in the elderly
- Identify recent advances in hypertension in the elderly and clinical research in geriatric nephrology.
- Be able to describe and translate advances in the areas of general nephrology, dialysis, mineral bone disease issues in the elderly, transplantation and hypertension into new standards and approaches to clinical care of geriatric patients with kidney diseases and related disorders.



Accreditation

The Louisiana State University School of Medicine-New Orleans is accredited by the Accreditation Council for Continuing Medical Education (ACCME) to provide medical education for physicians.

AMA Credit Designation Statement

The Louisiana State University School of Medicine-New Orleans designated this live educational activity for a maximum of 4.25 AMA PRA Category 1™ credits. Physicians should claim only the credit commensurate with the extent of their participation in the activity.



CNE Credit Designation Statement

LSU Health New Orleans School of Nursing, Faculty Development, Continuing Nursing Education & Entrepreneurial Enterprises is accredited as a provider of continuing nursing education by the American Nurses Credentialing Center's Commission on Accreditation. Nursing participants can earn up to 4.25 continuing nursing education contact hours; participants must attend the entire session and must complete the evaluation.

Registration

Pre registration is highly encouraged. Please register by emailing Tracy Hood at thood@lsuhsc.edu or by calling 504-568-4498.

Disclaimer

The material presented in this continuing medical education activity is being made available by the LSU Department of Internal Medicine is for educational purposes only. The material is not intended to represent the only method or procedures appropriate for the medical situation discussed. The materials is not intended, nor should be construed to, guarantee proficiency in the procedures demonstrated.

7:00 am Registration and Coffee

8:00 am Introduction

Erwin A. Aguilar, PharmD, MSc, MPH;
Efrain Reisin, MD, FACP, FASN,FASH;
Thomas Reske, MD, PhD

8:30 am Keynote Address: The Aging CKD Patient

Mark L. Unruh, MD

9:35 am Treatment of Hypertension in the Elderly and the Very Elderly Patients

Ashwin Jaikishen, MD

Mentor: Jonathan G. Owen, MD

10:10 am Benefits and Risks of Dialysis in the Very Elderly

Luis Vazquez-Moyet, MD

Mentor: Stephen A. Morse, MD

10:45 am Coffee Break

11:00 am Metabolic Bone Disease in the Elderly

Ramzi Vareldzis, MD

Mentor: Avanelle Jack, MD

11:35 am Polypharmacy and Renal Toxicity in the Elderly Patient

James H. Diaz, MD, MPH, DrPH, FACMT

12:05 pm Questions & Answers

Moderated by:

Efrain Reisin, MD, FACP, FASN,FASH and
Thomas Reske, MD, PhD

12:45 pm Closing Remarks & Evaluation

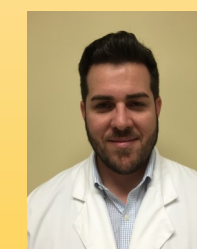
Erwin A. Aguilar, PharmD, MSc, MPH

1:00 pm Adjourn

LSU Nephrology and Hypertension Fellows



Ashwin Jaikishen, MD
Senior Nephrology Fellow
Department of Internal Medicine
Section of Nephrology and Hypertension
LSU Health New Orleans



Luis Vazquez-Moyet, MD
Senior Nephrology Fellow
Department of Internal Medicine
Section of Nephrology and Hypertension
LSU Health New Orleans



Ramzi Vareldzis, MD
Nephrology Fellow
Department of Internal Medicine
Section of Nephrology and Hypertension
LSU Health New Orleans