

Jeffrey Erickson, PhD

Associate Professor, Pharmacology and Neuroscience — Synaptic vesicle transport proteins: molecular and cellular biology of vesicular neurotransmitter transporters. Recent work from our laboratory indicates that vesicular glutamate transporter VGLUT1 does more than just control quantal size. VGLUT1 interacts with adaptor proteins involved in vesicle endocytosis and possibly even exocytosis to modulate vesicle release probability. This has broad implications for synaptic plasticity of cortical excitatory neurons in physiologic and pathologic states.

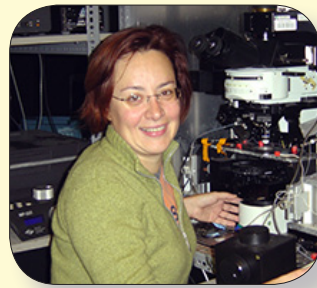
Hamilton Farris, PhD

Assistant Professor - Research, Otorhinolaryngology and Neuroscience — The underlying neural mechanisms that mediate sensory acuity by integrating the methodologies of psychophysics and neurophysiology. Our overall goal is to understand how pathologies of attention (e.g., deficit, schizophrenia) affect sensory processing.

Sonia Gasparini, PhD

Assistant Professor - Research, Cell Biology & Anatomy, and Neuroscience

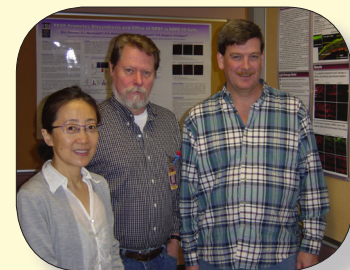
— Dendritic excitability and synaptic integration in hippocampal and entorhinal cortex neurons. We use electrophysiological techniques (dendritic and somatic recordings) combined with multiphoton imaging and uncaging to study how synaptic inputs arriving to a neuron are integrated to generate an output. Our ultimate goal is to understand how information is processed and stored in the brain regions that are essential for memory formation.



Dr. Sonia Gasparini

William C. Gordon, PhD

Associate Professor - Research, Ophthalmology and Neuroscience — Cell biology of retina under normal and pathological conditions; neuronal cell death and neuroprotection. Our laboratory uses an integrative approach, combining histology at the light and electron microscope levels, immunolocalization, auto-radiography, and electronic monitoring of retinal health with electroretinographic and optical coherence tomographic methods. These are applied to



Drs. XiaoChing Li, William Gordon and Christian Sheline

Laura Harrison, PhD

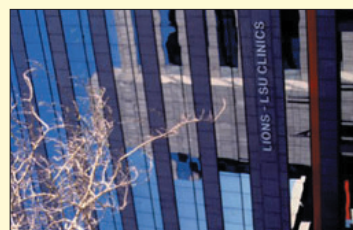
Assistant Professor - Research, Pharmacology and Neuroscience — Our laboratory is focused on signal transduction through dopamine receptors, the regulation of G protein-coupled receptor signaling, and dopamine receptor-mediated behaviors. We are investigating a novel GTP binding protein, Rhes, that is involved in dopamine signaling and has a potential role in dopamine-related disorders such as schizophrenia and drug addiction.



Dr. Laura Harrison

*Louisiana State University Health Sciences Center
School of Medicine
Neuroscience
Center of Excellence*

2020 Gravier Street, 8th Floor
New Orleans, LA 70112



**Neuroscience
Center of Excellence**

School of Graduate Studies

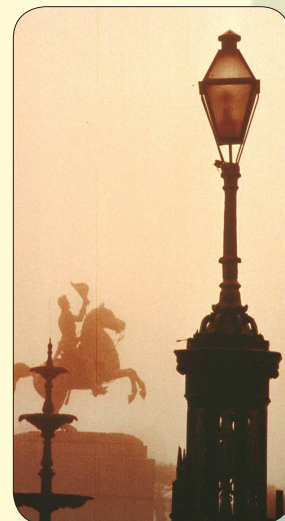
**Interdisciplinary Neuroscience
Graduate Program**

Offering Ph.D. and M.D./Ph.D. degrees

The Interdisciplinary Neuroscience Graduate Program is based at the LSU Neuroscience Center of Excellence, a multidisciplinary center. The Neuroscience Center fosters interactions and collaborations among neuroscientists and has created a rich and stimulating environment for graduate education. In addition to pre-doctoral training, post-doctoral training is also available.

The program offers pre-doctoral research training in fundamental neurosciences. The program leads to a Ph.D. in neuroscience and is offered by faculty members from twelve departments of the Health Sciences Center and the University of New Orleans. The breadth of research programs of the faculty encompasses all major areas of human cellular and molecular neurosciences, including the neurobiology of disease. Training is designed to provide students a broad, general

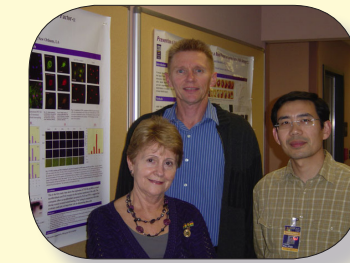
knowledge of neuroscience along with more intensive training in a highly specialized topic for academic and/or industrial research or teaching positions. Specific faculty research interests are listed at the beginning of the next column.



Center-Based Faculty

Nicolas G. Bazan, MD, PhD

Director, Boyd Professor, Ernest C. and Yvette C. Villere Chair of Ophthalmology, Professor of Biochemistry and Molecular Biology and Neurology, Chair; Executive Research Council – Translational Research Initiative LSUHSC- The unraveling of survival cell signaling in experimental epilepsy, stroke, Parkinson's, Alzheimer's and retinal degenerations are investigated in this laboratory by applying a multidisciplinary approach using primary cell culture, transgenic and knock-out animals, molecular biology and mediator lipidomics strategies. This research focuses on novel signaling pathways of essential fatty acids and platelet-activating factor. Dr. N. Bazan and his colleagues have found novel neuronal survival pathways as new therapeutic experimental targets. The goal is to ultimately translate into the clinic the mechanisms identified in the basic neuroscience laboratory.



Drs. Haydee E.P. Bazan, Jeffrey Erickson and Chunlai Wu

Haydee E.P. Bazan, PhD

Professor, Ophthalmology, Biochemistry & Molecular Biology and Neuroscience — Molecular mechanisms of inflammation, cornea wound healing and dry eye. The studies target mechanisms of neuroregeneration relevant

to understanding and treating complications generated by corneal nerve damage. A multifaceted approach is used in the laboratory that includes corneal surgery animal models, genetic models, functional tests, cell culture, lipidomic analysis, and molecular and cell biology approaches.



Dr. Ludmila Belayev

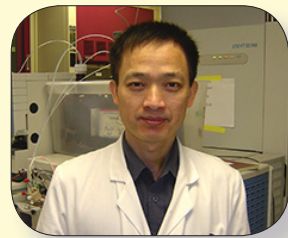
Ludmila Belayev, MD

Associate Professor - Research, Neurosurgery and Neuroscience — Development and evaluation of animal models of stroke, traumatic brain injury, neuro-protection, neurobehavioral, and histopathology.

Chu Chen, PhD

Associate Professor, Otorhinolaryngology and Neuroscience — Dr. Chen's research programs focus on neuroinflammation in hippocampal synaptic plasticity and neurodegeneration. His laboratory employs multiple approaches including electrophysiological recordings, molecular biology analyses and fluorescent imaging to address fundamental mechanisms underlying inflammation in physiology and neurological diseases. The following projects are currently undergoing or planned: mechanisms and prevention of Alzheimer's disease, endocannabinoid signaling in synaptic activity and neuroprotection, mechanisms of cannabinoid tolerance and marijuana-impaired synaptic plasticity and cognitive function, astroglial cells in synaptic plasticity and neuronal survival.

Jiucheng He, MD, PhD
Assistant Professor - Research, Ophthalmology and Neuroscience — Mechanisms of corneal wound healing and corneal myofibroblast biology.



Dr. Song Hong

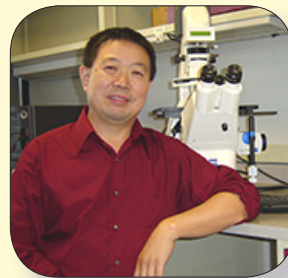
biochemistry and biology related to human health and diseases including retinal degeneration.

Minghao Jin, VMD, PhD

Assistant Professor, Ophthalmology and Neuroscience — We use molecular biology, proteomics, cell culture and gene knockout approaches to study the molecular mechanism of photoreceptor degeneration in inherited childhood blindness known as Leber's congenital amaurosis, the retinoid visual cycle essential for regeneration of the visual pigment responsible for sensing light, and signaling pathway of interphotoreceptor retinoid-binding protein in cone photoreceptor function and retinal cell survival.

XiaoChing Li, PhD

Assistant Professor, Cell Biology & Anatomy, and Neuroscience — We use an integrative approach (e.g., genomics, bioinformatics, and behavioral analysis) to study developmental plasticity, neurogenesis, vocal learning, and language related developmental disorders.



Dr. Youming Lu

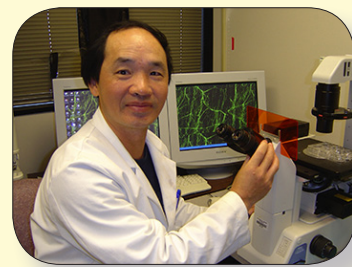
ion channel degeneration in brain disorders. Dr Lu has also identified that Epac mutations in autism impairs excitatory synaptic transmission that is associated with abnormal social behaviors. Dr Lu and research team have applied multiple advanced research techniques including gene-targeting, proteomics and double and single whole-cell patch clamp recordings from the central neurons and developed several mutant strains of mice including DAPK1-/- mice, Epac2-/- mice and conditional Epac1-/- mice. Ultimately, Dr Lu and his research team will apply these discoveries for developing the practical strategies in the treatment of Alzheimer's diseases, brain injury such as stroke and neuronal developmental disorders including autism.

Walter J. Lukiw, PhD

Associate Professor, Ophthalmology, Genetics and Neuroscience — Age-related macular degeneration (AMD), Alzheimer's disease (AD), bioinformatics, brain aging, brain-specific gene transcription, DNA arrays, gene expression analysis and profiling, memory acquisition and storage, messenger RNA (mRNA) speciation, micro RNA (miRNA) complexity, neurofilaments, neurotoxicology (focus on aluminum, copper, iron, lead and mercury), normal brain aging, schizophrenia, synaptogenesis, synaptic plasticity and the primary culture of human brain cells. My laboratory's main



Dr. Walter Lukiw



Dr. Jiucheng He

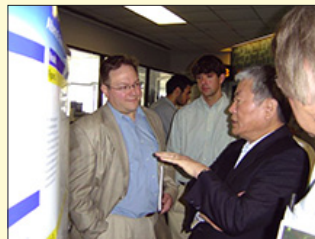
Song Hong, PhD

Assistant Professor, Ophthalmology and Neuroscience — Lipidomic pathways that regulate inflammation, angiogenesis, and choroid neovascularization. Lipid

research focus is on furthering our understanding of the regulation of human brain-specific gene expression in health and disease, and on the role that chromatin structure, epigenetics, neurotoxic metals, transcription factors and micro RNAs affect this process.

Alberto E. Musto, MD, PhD

Assistant Professor - Research, Neurosurgery and Neuroscience — This lab studies the molecular and cellular mechanism of the aberrant plasticity and brain damage in experimental epilepsy using behavioral protocols, state-of-the-art in electrophysiology *in-vivo* (multichannel electrodes recordings) immunohistology and biochemical techniques. The long term goal is to discover a novel approach for therapeutic intervention in epilepsy and degenerative brain disorders.



Drs. Alberto E. Musto and Susumu Tonegawa (M.I.T.), *Nobel Laureate in Physiology or Medicine, 1987*; on the occasion of the Neuroscience Center Retreat, 2008

Christian Sheline, PhD

Associate Professor, Ophthalmology and Neuroscience — We study the role of zinc in cell proliferation, in neurotoxicity after ischemia and trauma, and in beta cell death during diabetes. We are quantitating the therapeutic efficacy of genetic or pharmacologic reductions in free zinc and restoration of NAD+ levels.

Chunlai Wu, PhD

Assistant Professor, Cell Biology & Anatomy, and Neuroscience — We combine the powerful fly genetics with proteomic and biochemical approaches to understand the mechanisms underlying learning and memory, mental retardation and age-related neural disorders such as Parkinson's Disease and Alzheimer's Disease. **Key words:** Fly disease model, ubiquitination, proteomics.



Drs. Hugh Xia and Ham Farris

Houhui Xia, PhD

Assistant Professor, Cell Biology & Anatomy, and Neuroscience — Molecular and Signaling Mechanisms of Synaptic Plasticity: Focusing on the role of protein phosphatase-1 (PP1) signaling in NMDA receptor mediated synaptic transmission, long term depression (LTD), long term potentiation (LTP), homeostatic synaptic scaling and CREB dependent gene transcription. Our research will provide insights to therapeutic intervention in treating stroke, Alzheimer's disease, mental retardation and epilepsy.

Program

The core program includes neuroscience courses (medical neuroscience, investigative neuroscience, molecular neurobiology, and synaptic organization of the brain) and related courses (cell biology, biochemistry, and molecular biology). Rotation through faculty laboratories is required and provides students with research experience from the beginning of their tenure. Students participate in neuroscience seminars and colloquia, Neuroscience Center retreats, and other science activities sponsored by the LSU Health Sciences Center. Students are encouraged to become actively involved in the Greater New Orleans Chapter of the Society for Neuroscience.



Drs. R. Ranney Mize and Nicolas G. Bazan, Co-Directors of the Program

Research Facilities

The faculty laboratories are located in modern buildings with state-of-the-art equipment. In addition, the Health Sciences Center Core Laboratory, which is a service facility, provides oligonucleotide and peptide synthesis and sequencing, amino acid analysis and purification, mass spectrometry, flow cytometry, transgenic facility, gene microarray, two-photon and confocal microscopy, and phospho-imaging. Equipment for high-speed sequencing of DNA is also available.

Extensive library facilities are available at the Isché Health Sciences Library of the Health Sciences Center and the Earl K. Long Library at the University of New Orleans. A comprehensive Computer Services Center is available on campus.



Drs. Carmen Canavier and Chu Chen

Financial Aid

Graduate stipends are available from the Neuroscience Center, individual departments, and the LSU Health Sciences Center Graduate School. Supplements can be obtained from faculty grants and other sources for those students who are highly qualified. Fellowships from NIH, NSF, and the Howard Hughes Foundation are also available on a competitive basis. Students who are selected to receive stipends are not required to pay tuition but are responsible for activity fees.

Applying

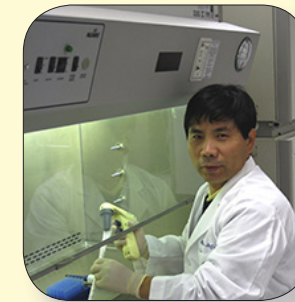
Applicants must hold a bachelor's degree or the equivalent thereof. Students should have taken courses in biology, chemistry, mathematics, physics, and computer science. The General Test of the Graduate Record Examinations is required (minimum score 1,200), and the Subject Test in any area of science is recommended. Admission is determined by test scores, written recommendations, a written statement of interests and goals, and a personal interview.



Drs. Joseph Moerschbaecher and Nicolas G. Bazan presenting an award and plaque to **Dr. Bengt Samuelson**, *Nobel Laureate in Physiology or Medicine, 1982*



Sir John Vane *Nobel Laureate in Physiology or Medicine 1982* "for his work on aspirin and the subsequent discovery of prostacyclin" and **Dr. Nicolas G. Bazan**



Dr. Minghao Jin

Location

The LSU Health Sciences Center is near the heart of historic down-town New Orleans, within 10 minutes of the French Quarter. Exciting yearly events in New Orleans include Mardi Gras and the Jazz and Heritage Festival. The city is famous for its jazz, cuisine, and cultural activities, such as the symphony, museums, and opera. The city is located only 90 minutes from the Gulf of Mexico; the subtropical climate permits a variety of year-round activities. The New Orleans metropolitan area has a population of approximately 1.2 million and has five major universities.

Living and Housing

The cost of living in the New Orleans area is generally below the national average. A recently remodeled dormitory with an exercise area and health facility is available on the Health Sciences Center campus. Living accommodations are also available in the historic Garden District, Uptown, and the Warehouse District, all of which offer distinctive Greek Revival and Victorian architecture. Additional accommodations can also be found throughout the city at a reasonable cost. Health care is available on campus through the Student Health Center of the LSU Medical School.



Dr. Marshall W. Nirenberg Nobel Laureate in Physiology or Medicine 1968 "for Deciphering the Genetic Code" (shared with Gobind Khorana & Robert Holley) with Neuroscience Center of Excellence Students

Information

Nicolas G. Bazan, M.D., Ph.D., Director
Neuroscience Center of Excellence
 2020 Gravier Street, Suite D, New Orleans, Louisiana 70112
 Telephone: 504-599-0909 Fax: 504-568-5801 e-mail: nbazan@lsuhsc.edu
www.neuroscience.lsuhscc.edu



Dr. Edmond Fischer, *Nobel Laureate in Physiology or Medicine, 1992*, presenting his Chancellor's Award Lecture in Neuroscience