

November 30, 2021



School of Medicine  
Department of Pediatrics

## LSU Pediatrics Tuesday Tidbits

Welcome to the Department of Pediatrics' weekly email blast designed to deliver important department information straight to your inbox.

Visit our  
website

### LSU Pediatrics Announcements



#### Colleen LeBlanc Named Gastroenterology Fellowship Program Director

Congratulations to Dr. Colleen LeBlanc who will take on the role of Program Director of the Gastroenterology Fellowship Program as of December 1, 2021. Dr. LeBlanc has served as the Associate Program Director since 2019.



**The Southern Center**  
for Adolescent and Young Adult  
Health Equity

We're excited to announce that The Southern Center for Adolescent and Young Adult Health Equity and Dr. Ryan Pasternak were awarded a \$800,000 grant over 24 months from the Packard Foundation in support of our innovative work in sexual and reproductive health. These funds will help support expanding adolescent reproductive and sexual health care and advance The Southern Center's 4 pillars of Clinical Care: Education, Advocacy/Community Engagement, and Quality Improvement/Research.

# LOUISIANA DEPARTMENT OF HEALTH

*Bureau of Community Partnerships and Health Equity*

## COVID-19 Vaccines: A Conversation About Vaccinating Children Ages 5-11

*With children ages 5-11 eligible for the COVID-19 vaccine, you may still have questions — that's OK! Please join us for a conversation on the safety and importance of vaccination, so you can enjoy the holidays with confidence.*



**DR. AMANDA  
DUMAS**

*Louisiana Department  
of Health*

**DR. ERIC "DOC"  
GRIGGS**

*Access Health LA*

**DR. JOHN  
VANCHIERE**

*Ochsner LSU Health*

**DR. BENJAMIN  
SPRINGGATE**

*LSUHSC School  
of Medicine*

**DR. ALCYIA  
RODGERS**

*Ochsner Medical Center*

**Tuesday, November 30th 4-5:15PM CST**  
**[Click Here to Register!](#)**



**LSU Pediatrics Holiday**

# Celebration

Friday, December 17, 2021

11:00am - 1:00pm

State Street Conference Center

Lunch will be served.

Remember to bring a book to donate to  
the  
Healthy Tigers Annual Book Drive!



## Healthy Tigers Annual Book Drive

The residents will be collecting books for the Healthy Tigers annual book drive starting the first week of December through the first week of January. The donation boxes will be located in the resident lounge, physician lounge, CHNOLA 4th floor administration suite, LSU business office and in the State Street Administration office. We will be collecting new and gently used children's books. Books most in need are board book as well as books for teenagers. The patients at Tigercare are always excited get a new book at each well visit, and this helps to encourage reading as a healthy habit. Thank you all in advance.

## CHNOLA/LSU/TULANE IRB Office Hours

Have you ever had unanswered questions about the IRB process? Wondering if there is a secret magic to getting your protocols written, consent forms correct the first time and have your project make it through the IRB? Wonder about who the people are behind those IRB emails? If so, please join us for informal virtual IRB drop in office hours. Talk to our amazing IRB staff from all three institutions and get their insights on the best approach to getting your study approved the first time.

When: the first Friday of every month, 12:00pm - 1:00pm  
Topic: CHNOLA/LSU/TULANE IRB OFFICE HOURS  
Where: via Zoom, <https://tulanehipaa.zoom.us/j/96665234856>

---

## Other Announcements

Updated LSU COVID Policies ([information](#))

LSUHSC COVID Self-Reporting ([information](#))

Latest edition of LSU SOM's *The Pulse*. ([link](#))

Resident Participation in Research ([information](#))

Grant Opportunity: Thrasher Research Fund ([information](#))

LSUHSC IRB's Researcher Education Series ([information](#))

LSU Proof-of-Concept Fund- LIFT2 Round 12 Announcement ([information](#))

Updated: Several Avenues of Stats Support, Education and Consultation ([information](#)) ([using stats models through CITI](#))

Importance of Time Certification ([information](#)) - learn more about why we certify time each month!

Important Notice: P-Card Restrictions on AAP Purchases ([information](#))

Use of Non-LSUHSC Email ([information](#))

New Pre-Review for Grant Proposals service offered by LSU ([information](#))

Download the new Department Composites for the 2021-2022 academic year! ([Resident](#), [Fellow](#), [Faculty](#)).

## FACULTY DEVELOPMENT

*New video monthly*

### November Video: Zoom Teaching Tips

In this season of Thanksgiving, I'm thankful for our amazing faculty and our dedication to excellence in education! This is a very short (under 3 minutes!) video with 10 quick tips for ZOOM. Most of us are attending lots of Zoom meetings and teaching sessions, so this month and for a few to come let's use this space to focus on improving our experience and that of our learners.

<https://www.youtube.com/watch?v=8TIII8MRtSO>

Please send any suggestions or areas of faculty development need to [acree1@lsuhsc.edu](mailto:acree1@lsuhsc.edu).

If you are interested in other forms of Faculty Development, visit these websites:

- [LSU Pediatrics Faculty Development Page](#)

For questions or comments regarding Faculty Development, please contact [Amy Creel](#).

## CHNOLA Announcements

Latest edition of CHNOLA Employee E-News ([link](#))

### **Report your flu-like symptoms**

Please notify Employee Health at 504.962.6270 if you have any flu-like symptoms before reporting to work. Symptoms may include cough, congestion, headache, with or without fever.

Tip sheet for CyraCom and Other Language Access Services at CHNOLA ([information](#))

## Upcoming Events

### **Grand Rounds**

*For those who prefer an Outlook Calendar Reminder for Grand Rounds, please click [here](#) for directions that walk you through creating a recurring reminder.*

# Virtual Pediatric Grand Rounds



Children's Hospital  
New Orleans  
LCMC Health

## "Pediatric AIDS 40 Years On"

Wednesday, December 1, 2021

Noon

Please join Pediatric Grand Rounds from your computer, tablet, or smartphone:

To receive CME or CEU Credit, you **MUST register through EventBrite** and use the EventBrite link to join Grand Rounds.

**Register here:** <https://www.eventbrite.com/e/pediatric-grand-rounds-pediatric-aids-40-years-on-912021-tickets-166804991219>

**If you DO NOT want CME/CEU credit for this activity, you can join via Zoom. Your attendance will not be counted.**

**Zoom link:** <https://lsuhsc.zoom.us/j/92312437678?pwd=amd0RENwQWJ2L1BDNW1zeHVQRHhjQT09>

**Meeting ID:** 923 1243 7678

**Passcode:** 235623

**Note:** This is a live activity. The link is only valid from noon – 1:00 PM and the presentation will not be recorded for CME or CEU credit. Please register and join the activity via EventBrite to receive credit.



**Mark Kline, MD**, serves as the Physician-in-Chief and Chief Academic Officer for LCMC Health's Pediatric Market. A pediatric infectious disease specialist by training, Dr. Kline founded an international pediatric HIV/AIDS program, Baylor International Pediatric AIDS Initiative (BIPAI), a program that builds healthcare infrastructure, trains health professionals, and provides medical care and treatment to children and families across sub-Saharan Africa and in Romania. BIPAI currently provides HIV/AIDS care and treatment to more than 350,000 of the world's poorest and least fortunate children and families, more than any other organization worldwide. This pioneering work led to Dr. Kline's nomination for the Nobel Peace Prize in 2019. Additionally, Dr. Kline has been the recipient of more than \$150 million in research and training grants from the U.S. National Institutes of Health and Centers for Disease Control and Prevention. Dr. Kline serves as Editor in Chief of Rudolph's Pediatrics, one of the world's most widely recognized and read medical textbooks. He has authored more than 250 articles and textbook chapters and has presented throughout the world on a myriad of child health topics.

**Objectives:** At the conclusion of this activity, participants should be able to:

1. Summarize the history of pediatric HIV/AIDS in the U.S.
2. Describe how pediatric HIV/AIDS has evolved globally over the past 25 years.
3. Generalize how the global rollout of HIV/AIDS care has opened the door to treatment of other life-threatening diseases impacting children across the developing world.

**Intended audience:** This activity is specifically directed towards the pediatrician, but it is open to all other interested physicians, residents, medical students, and allied health professionals.

**CME statement:** Children's Hospital is accredited by the Louisiana State Medical Society to provide continuing medical education for physicians. Children's Hospital designates this live activity for a maximum of *1.0 AMA PRA Category 1 Credit*<sup>™</sup>. Physicians should claim only the credit commensurate with the extent of their participation in the activity.

**CEU statement:** Children's Hospital is approved as a provider of nursing continuing professional development by Louisiana State Nurses Association, an accredited approver by the American Nurses Credentialing Center's Commission on Accreditation.



**Eventbrite link to register for Grand Rounds on 12/1:**

<https://www.eventbrite.com/o/chnola-office-of-medical-education-34140724807>

**Anyone who does not wish to earn CME/CEU credit can continue join Grand Rounds through the Zoom portal:**

[https://lsuhsc.zoom.us/j/92312437678?](https://lsuhsc.zoom.us/j/92312437678?pwd=amd0RENwQWJ2L1BDNW1zeHVQRHhjQT09)

[pwd=amd0RENwQWJ2L1BDNW1zeHVQRHhjQT09](https://lsuhsc.zoom.us/j/92312437678?pwd=amd0RENwQWJ2L1BDNW1zeHVQRHhjQT09)

Meeting ID: 923 1243 7678, Passcode: 235623

One tap mobile: +16465588656 or +13017158592

Any questions about Eventbrite can be sent to [emma.cradyc@lcmchealth.org](mailto:emma.cradyc@lcmchealth.org).

## LSUHSC Research Café

Mark your calendar for Research Café opportunities at LSUHSC this fall! You can find more information on the series [here](#). All meetings will be held in person and via [Zoom](#).

### **Wednesday, December 8, 2021, 12:00pm - 1:00pm, Proposal Development Workshop**, Lion's Building-6th Floor- Large Lecture Room or via [Zoom](#).

Fern Tsien, PhD, Peter Winsauer, PhD, Andrew Hollenbach, PhD, Lucio Miele, MD, PhD

This workshop is designed as an introduction to grant writing for faculty who have little or no experience writing a peer-reviewed grant application. This workshop is designed to help participants strategize for and prepare effective grant proposals and includes strategies for writing applications, identifying available federal and foundation grants, types of grants & activity codes (i.e., R01, T32, F30), and grant submission procedures, including working with your business manager and Office of Research Services. An overview of the grant proposal components will be discussed, including Specific Aims, Biosketch, Budget, Facilities and Other resources, Resource Sharing, Data Management Plan, and Letters of Collaboration.

## Department Wellness

CHNOLA's childcare center open for children of providers/staff working at Children's Hospital ([flyer](#))

LSU Pediatrics Wellness Resources ([information](#))

---

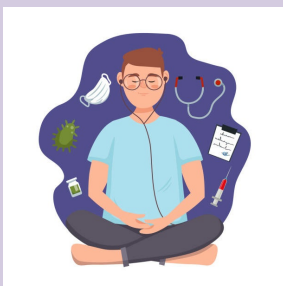
### Wellness Committee - Book of the Quarter

The wellness committee would like to share our book for the quarter! It is called "The Guest List: A Novel" by Lucy Foley. Please join us on **Wednesday, January 12 at 7:30PM (location TBD)** to discuss this highly-recommended book over cocktails/wine!

Please RSVP by **December 20th** with Eden Haile via email ([ehaile@lsuhsc.edu](mailto:ehaile@lsuhsc.edu)) or text (703) 953-5611.

---

### Mindfulness for Healthcare Sessions at Children's Hospital



The LCMC Health Well Being Team will be hosting several virtual Mindfulness for Healthcare sessions in the upcoming weeks. The sessions will be hosted by Dr. Jillian Horton, an award-winning medical educator who completed chief wellness officer training at Stanford University and mindfulness training at the University of Rochester.

- December 7<sup>th</sup> @ 5:30-6:30pm ([click here to join](#))

- December 8<sup>th</sup> @ 12:00-1:00PM ([click here to join](#))

## Department Anniversaries

The following employees celebrate another year with the department this month. Thank you for your continued service to LSU Pediatrics!

Colleen Bodet, 19 years  
Ricardo Gomez, 18 years  
Emily Masoumy, 2 years  
Dedrick Moulton, 2 years

---

Looking for old newsletters?  
View the *Tuesday Tidbits* archive on the department's website. ([link](#))

Submit information to the next Tuesday Tidbits

Department of Pediatrics | LSUHSC